

# DEBRIS MANAGEMENT PLAN



March 2008

## TABLE OF CONTENTS

ACRONYMS .....	pg iv
I. AUTHORITY .....	pg 1
II. GENERAL .....	pg 1
III. PURPOSE .....	pg 1
IV. SITUATION AND ASSUMPTIONS .....	pg 2
A. Situation .....	pg 2
B. Assumptions .....	pg 2
V. POTENTIAL DISASTER SCENARIOS .....	pg 3
A. Earthquake .....	pg 3
B. Fires .....	pg 4
C. Flood/ Mudslides.....	pg 4
D. Civil Unrest .....	pg 4
E. Weapons of Mass Destruction (WMD) .....	pg 5
VI. CONCEPT OF OPERATIONS .....	pg 6
A. Debris Management Center .....	pg 7
B. Debris Manager .....	pg 7
C. Debris Coordinator .....	pg 8
D. Bureau and Department's Responsibilities .....	pg 9
1. Los Angeles Fire Department .....	pg 9
2. Los Angeles Police Department .....	pg 9
3. Bureau of Engineering .....	pg 9
4. Bureau of Contract Administration .....	pg 10
5. Bureau of Street Services .....	pg 10
6. Bureau of Sanitation .....	pg 10
7. Bureau of Street Lighting .....	pg 11
8. Emergency Preparedness Department .....	pg 11
9. Public Affairs Office.....	pg 11
10. Building & Safety .....	pg 11
11. Planning Department .....	pg 12
12. Environmental Affairs Department .....	pg 12
13. Department of Transportation .....	pg 12
14. Office of the City Administrative Officer .....	pg 12
15. Office of the City Attorney .....	pg 13
16. General Services Department .....	pg 13
17. Personnel Department .....	pg 13
E. Proprietary Department's Responsibilities .....	pg 13
1. Los Angeles Department of Water and Power .....	pg 13
2. Port of Los Angeles (Harbor Department) .....	pg 14

3. Los Angeles World Airports .....	pg 14
F. Emergency Communications Plan .....	pg 15
G. Health and Safety Plan and Procedures .....	pg 15
1. Communication .....	pg 15
2. Identification of Hazardous Materials associated with Construction Materials .....	pg 16
3. Personnel Protective Equipment and Worksite Safety .....	pg 16
4. Management and Supervisory Responsibility .....	pg 17
VII. RESPONSE AND RECOVERY OPERATIONS .....	pg 17
A. Phase I – Initial Response .....	pg 17
B. Phase II – Recovery .....	pg 18
C. Types of Debris .....	pg 19
VIII. DEBRIS REMOVAL PROCESS .....	pg 20
A. Public Property/Right-of-Way Debris Removal .....	pg 20
B. Private Property Debris Removal .....	pg 20
C. Unsafe Building .....	pg 20
D. Curbside Pick-up .....	pg 21
IX. HOUSEHOLD HAZARDOUS WASTES REMOVAL .....	pg 21
A. Household Hazardous Waste (HHW) .....	pg 21
B. Disaster Debris HHW Operations .....	pg 22
C. HHW Specific Public Information Program .....	pg 22
X. CONTRACTS .....	pg 22
A. Reasonable Cost .....	pg 23
B. Types of Contracts .....	pg 24
C. Ineligible Contracts .....	pg 25
D. Monitoring Contractors .....	pg 25
E. Site Monitors .....	pg 25
F. Load Tickets .....	pg 27
XI. TEMPORARY DEBRIS STORAGE AND REDUCTION (TDSR) SITES .....	pg 27
A. Procedures for Evaluating Potential Sites .....	pg 27
B. Emergency Waiver of Standards Regulation .....	pg 28
C. Site Preparation and Closeout Procedures .....	pg 29
1. Site Operations .....	pg 29
2. Site Closeout Procedures .....	pg 30
XII. DEBRIS REDUCTION METHODS .....	pg 30
A. Volume Reduction by Recycling .....	pg 31
B. Volume Reduction by Grinding and Chipping .....	pg 31

XIII. SPECIALIZED DEBRIS OPERATIONS .....	pg 32
A. WMD Debris .....	pg 32
B. Hazardous Material – Asbestos .....	pg 32
C. Animals .....	pg 33
XIV. DOCUMENTATION .....	pg 33
XV. ASSISTANCE/MUTUAL AID .....	pg 34
XVI. PLAN MAINTENANCE .....	pg 34

## **APPENDICES**

Appendix A. On-Call Demolition Contractors
Appendix B. Non-Active Landfills
Appendix C. Construction and Demolition Recycling Guide
Appendix D. Inert Disposal Facilities and Diversion Designations
Appendix E. California Commercial Offsite Hazardous Waste Facilities

**ACRONYMS**

ACM	Asbestos Containing Materials
BOC	Bureau Operation Center
BCA	Bureau of Contract Administration
BOE	Bureau of Engineering
BOS	Bureau of Sanitation
BOSL	Bureau of Street Lighting
BSS	Bureau of Street Services
C&D	Construction and Demolition
CAO	Office of the City Administrative Officer
CBRNE	Chemical, Biological, Radiological, Nuclear and Explosive
CRT	Cathode Ray Tube
DC	Debris Coordinator
DM	Debris Manager
DMC	Debris Management Center
DOT	Department of Transportation
DPW	Department of Public Works
DTSC	Department of Toxic Substances Control
DWP	Department of Water and Power
E&PM	Engineering and Project Management
EAD	Environmental Affairs Department
EOB	Emergency Operations Board
EOC	Emergency Operations Center
EOO	Emergency Operations Organization
EPD	Emergency Preparedness Department
ESF	Emergency Support Functions
FEMA	Federal Emergency Management Agency
FIT	Field Inspection Teams
GETS	Government Emergency Telecommunications Service
GSD	General Services Department
HHW	Household Hazardous Waste
IH	Industrial Hygiene
LA	Los Angeles

LADBS	Los Angeles Department of Building and Safety
LADPW	Los Angeles Department of Water and Power
LAFD	Los Angeles Fire Department
LAMC	Los Angeles Municipal Code
LAPD	Los Angeles Police Department
LAWA	Los Angeles World Airport
LAX	Los Angeles International Airport
LCM	Lead Coated/Containing Materials
LEA	Local Enforcement Agency
PAO	Public Affairs Office
PEL	Permissible Exposure Limits
PIO	Public Information Officer
POLA	Port of Los Angeles
PW	Public Works
R&R	Recovery and Reconstruction
T&M	Time and Materials
TDSR	Temporary Debris Storage and Reduction
USACE	United States Army Corps of Engineers
VHS	Video Home System
VOC	Volatile Organic Carbons
WCB	Workers' Compensation Board
WMD	Weapons of Mass Destruction

## **I. AUTHORITY**

Administrative Code Division 8, Chapter 3 establishes the Emergency Operations Organization of the City and defines its structure and responsibilities. This Code section also authorizes the Mayor to declare a local emergency, and enumerates other powers the Mayor may exercise in an emergency situation.

Mayoral Directive EP-1 requires City employees to report to work in an emergency, empowers the Mayor to assign employees to emergency duties; stipulates that all requests for Mutual Aid must be approved by the Mayor; and requires each department to prepare and annually update an emergency plan.

## **II. GENERAL**

City of Los Angeles is susceptible to many natural and human-made hazards and these hazards can generate large amounts of debris. The debris poses immediate public health and safety threats from disease, fire, and obstructions to emergency response activities in addition to the long-term environmental threats from debris storage and disposal operations. This Debris Management Plan identifies the actions required to plan for and respond to a natural or human-made debris-generating event. When properly implemented, the result will be a coordinated and comprehensive effort to reduce debris-related impacts of a disaster within the City.

City of LA Department of Public Works (DPW) is the lead agency responsible for emergency debris clearance on essential transportation routes and for coordinating the permanent removal and disposal of all debris deposited along or immediately adjacent to public right-of-ways.

## **III. PURPOSE**

This Debris Management Plan has been developed to provide a framework for City government and other entities to clear, remove, reduce, recycle, and dispose of debris generated during a public emergency within city limits. This Plan unifies the efforts of City, County, State, and Federal organizations for a comprehensive and effective approach to:

- Provide organizational structure, guidance, and standardized guidelines for the clearance, removal, staging, reduction, recycling, processing, and disposal of debris caused by a major debris-generating event.
- Establish the most efficient and cost effective methods to resolve disaster debris removal staging, reduction, recycling, processing, and disposal issues.
- Mitigate potential health hazards from hazardous debris materials.

- Implement and coordinate private sector debris removal, recycling, and disposal contracts to maximize cleanup efficiencies.
- Expedite debris removal, recycling, and disposal efforts that provide visible signs of recovery in order to resume continuation of government services.
- Coordinate partnering relationships through communications and pre-planning with local, State, and Federal agencies that have debris management responsibilities.
- Develop the tracking and documentation procedures required to allow the reimbursement of debris removal, recycling, and disposal efforts resulting from a disaster.
- Develop a preventative program along with a monitoring and enforcement program to minimize fraudulent activities.

#### **IV. SITUATION AND ASSUMPTIONS**

##### **A. Situation**

- Natural disasters such as earthquakes and flooding precipitate a variety of debris that includes, but is not limited to, trees and other vegetative organic matter, construction materials, appliances, personal property, mud, and sediment. Human-made disasters such as terrorist attacks may result in a large number of casualties and heavy damage to buildings and basic infrastructure. Crime scene constraints may hinder normal debris operations, and contaminated debris may require special handling. These factors will necessitate close coordination with local, State and Federal law enforcement, health, and environmental officials.
- The quantity and type of debris generated from any particular disaster will be a function of the location and kind of event experienced, as well as its magnitude, duration, and intensity.
- The quantity and type of debris generated, its location, and the size of the area over which it is dispersed will have a direct impact on the type of removal and disposal methods utilized to address the debris problem, the associated costs incurred, and the speed with which the situation can be addressed.

##### **B. Assumptions**

This Plan addresses the clearing, removal, and disposal of debris based on the following assumptions:



- A major natural or human-made disaster that requires the removal of debris from public or private lands could occur at any time;
- The amount of debris resulting from a major disaster will exceed the City's in-house removal, processing, recycling, and disposal capabilities;
- The city will contract for additional resources to assist in the debris removal, reduction, recycling, and disposal processes;
- The city will meet its State-mandated and city-adopted recycling policies and diversion goals, and will maximize reduction and recycling of divertible materials to minimize disposal at landfills;
- The governor will declare a state of emergency that will authorize state resources to assist in removal and disposal of debris. If the disaster exceeds both local and state resources, the governor will request a Presidential Disaster Declaration;
- Federal resources will be requested to assist in removal, reduction, recycling, and disposal of debris.

## V. POTENTIAL DISASTER SCENARIOS

City of Los Angeles may be susceptible to a variety of disasters, including earthquakes, brushfires, floods, civil unrest and weapons of mass destruction. These disasters can generate a significant amount of debris that could severely impact the existing solid waste collection, processing, reuse, and disposal system.

The following is a brief discussion of the various types of disasters affecting the City of LA, along with a description of the debris associated with each disaster.

### A. Earthquakes

**Disaster Potential.** Seismic events present the most widespread threat of devastation to life and property and are considered as the highest-risk natural disaster to which the City of LA is susceptible. With an earthquake, there is no containment of potential damage, as is possible with a brushfire or flood. Earthquakes generate shock waves and displace the ground along fault lines. These seismic forces can cause buildings and bridges to be displaced or collapse in a localized area and damage buildings and other structures citywide. Secondary damage from fires, explosions, and localized flooding from broken water pipes can increase the amount of debris.

**Types of Debris Generated.** Earthquake debris includes building materials, personal property, and sediment from mudslides. Post-earthquake debris composition evolves with time. If the material is from damaged structures, it is likely to contain personal belongings, valuables, and mementos. For damaged structures that are still habitable, residents and businesses will usually begin soon after the main shock to clean up broken glass and ceramics, spilled foods

and liquids, and broken furniture and appliances. Later, demolition material (including concrete, asphalt, bricks, gypsum wallboard, metal, and soil) comprises the majority of the disaster-related waste stream. Household and other hazardous wastes may be mixed with any earthquake-related debris.

## **B. Fires**

**Disaster Potential.** Brush fires are a major threat to life and property in the City of Los Angeles due to unique fuel, terrain and climatic conditions. The hazard is especially great when the dry “Santa Ana” winds arrive, usually in the fall and winter seasons. The desert-blown Santa Anas turn vegetation to tinder and spread localized fires quickly.

**Types of Debris Generated.** While fires leave less debris than other types of disasters, they still generate much waste. For example, demolished houses contribute noncombustible debris. Burned out cars and other metal objects, as well as ash and charred wood waste, also must be managed. In addition, large-scale loss of plants serving as ground cover can lead to mud slides, adding debris to the waste stream.

## **C. Floods/ Mudslides**

**Disaster Potential.** The City of Los Angeles is very susceptible to floods and mudslides. The population increase and urbanization have increased storm water runoff by creating impermeable foundations and surfaces which decrease the amount of water percolating into the soil. In turn, more runoff enters local storm drains and flood channels. Flood hazard areas, or flood plains which are subject to 100-year floods, comprise approximately 30 square miles of the City and approximately 15 square miles of the hazard areas were buildable. FEMA estimated that over 30,100 structures were located in flood hazard areas.

**Types of Debris Generated.** Debris from floods is caused by structural inundation, mudslide and high-velocity water flow. Flooding causes damage to structures and personal belongings, and can generate large volumes of downed vegetation, mud and soil, household debris (e.g. appliances; furniture; rugs, carpet, and padding; and HHW), sandbags, plastic sheeting, and demolition debris.

## **D. Civil Unrest**

**Disaster Potential.** The entire City of Los Angeles is vulnerable to civil unrest. There are no specific hazard zones that can be identified or predicted. Civil disorders and disturbances are human-caused disasters with tremendous potential for causing damage to the City. Like many other disasters, they are taken for granted since they occur infrequently, but unlike other types of disasters, these events are especially harmful with their effects on human lives

in that they generally occur in times of already heightened societal tensions, and in fact are often directly caused by them.

**Types of Debris Generated.** Civil unrest can result in property damage from fires or looting. Ash and demolition debris, along with damaged personal belongings are typical wastes.

#### **E. Weapons of Mass Destruction (WMD)**

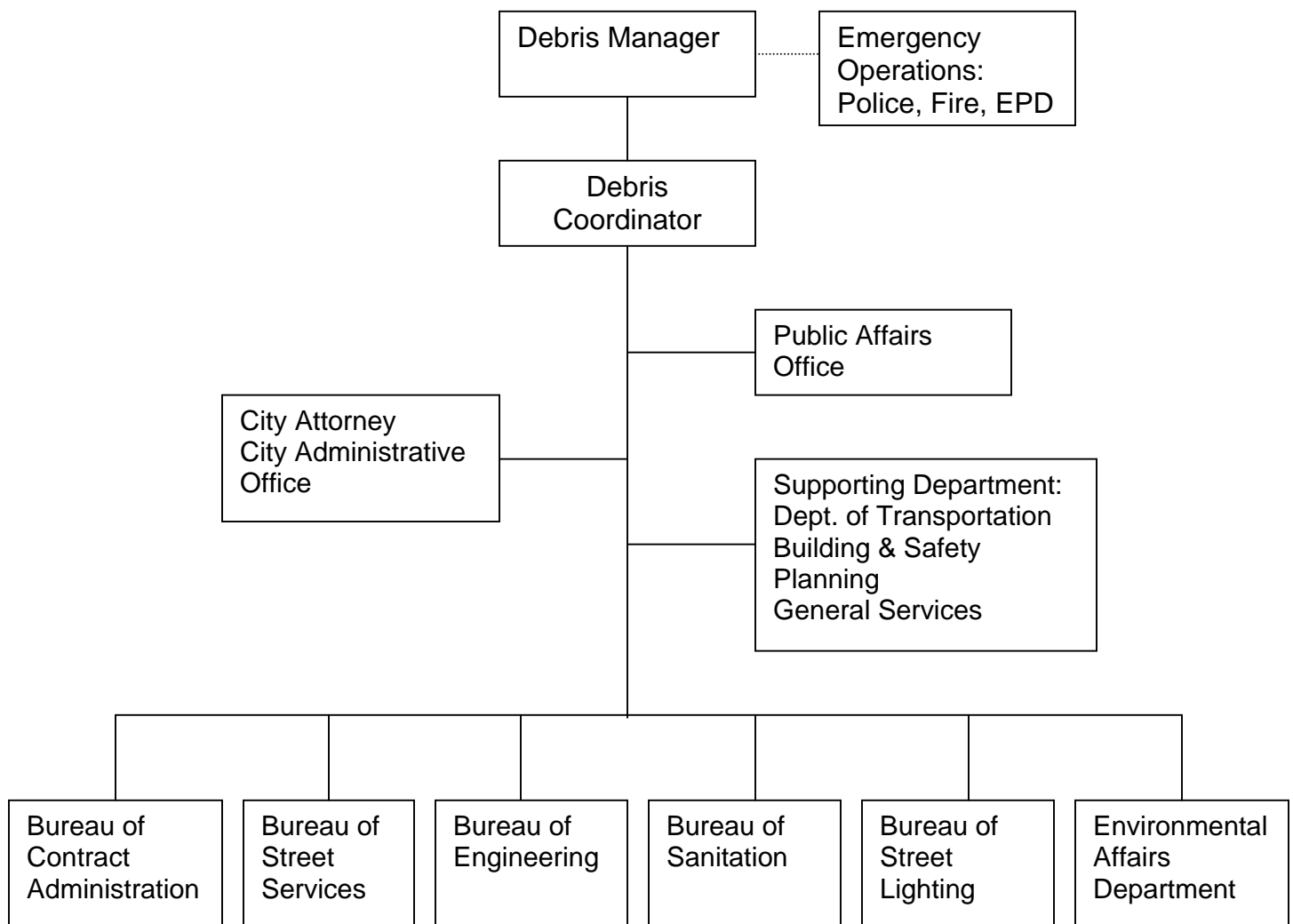
**Disaster Potential.** Terrorism has always been a threat but recently the threats have reached dynamic proportions with terrorists groups driven by religious and cultural ideologies becoming willing enough to produce or use deadly weapons causing mass destruction, to be used on civilian targets. Such weapons include chemical, biological, radiological, nuclear and explosive (CBRNE) devices and are generally termed as weapons of mass destruction (WMD). An act of terrorism could generate little to no debris at all, or could result in large quantities of multiple types of debris, potentially requiring highly specialized personnel, procedures, and equipment for its removal and disposal. It could cause lasting disruption, spread panic and fear among the masses, and generate significant psychological impact on a population and its infrastructure.

**Types of Debris Generated.** Debris generated as a result of an act of terrorism is highly variable in both quantity and type, depending upon the specific means utilized by the terrorists. Depending on the choice of weapons used to terrorize the population, the debris may consist of dead bodies, property damage and demolition debris. Nuclear and explosive devices will result in infrastructure damage and death. The debris may be contaminated and require special debris handling and disposal with the support of law enforcement authorities, the coroner's office, and health officials.

## VI. CONCEPT OF OPERATIONS

The Debris Management Team is responsible for all debris management activities. This Plan establishes a basic organization for a Debris Management Team and assigns specific responsibilities to the bureaus/department who will staff that team. The organizational structure of the Debris Team is as follows:

### DEBRIS MANAGEMENT TEAM



## **A. Debris Management Center**

The Debris Management Center (DMC) is organized to provide a central location for the coordination and control of all debris management requirements. The Debris Manager, Debris Coordinator (DC), and a joint debris team made up of personnel from the five Bureaus of Department of Public Works, Environmental Affairs Department, and all applicable departments will staff the DMC as required. All requests for debris removal or disposal from the emergency response staff will go through the DC. Requests for debris removal from public facilities and roadways will be reviewed and approved by the DC before being directed to the appropriate Department/Bureau Coordinators to implement the request. The five Bureaus of Public Works will activate their Bureau Operation Center (BOC) to coordinate the bureau's emergency response effort and may continue to be activated in the recovery phase.

The EOC will be activated during the disaster response phase to assist the DMC during a disaster. The EOC will request the DMC for debris clearance and removal. During the long-term recovery phase, the EOC may not be activated but the DMC will continue to be activated to coordinate all recovery efforts.

## **B. Debris Manager**

The Debris Manager (DM) for the City of Los Angeles is in charge of coordinating the disaster debris removal and disposal operations. The DM will conduct meetings as needed with DPW Bureau staff, contractors, and other local, county and Federal agencies to ensure a timely and coordinated response. The DM is responsible to ensure that BSS carries out Phase I of the plan, which is to clear evacuation routes and access routes to critical facilities and other streets as requested by the Mayor of Los Angeles, Fire and Police Departments, and Emergency Operations Center (EOC) Director. The DM will simultaneously implement Phase II of the plan, which is the permanent removal and disposal of debris along or immediately adjacent to the public right-of-way.

At the time of the disaster, BPW will meet with the appropriate Bureau heads to identify the appropriate individual to take on the role of DM. Designation of the DM will depend on the disaster at hand and the employee best qualified to oversee the debris management process. The DM's role may be filled by a Principal Engineer from BOE, a Division Manager from BOS or an equally qualified employee.

The Debris Manager's responsibilities include, but are not limited to, the following:

- Overall control of the Debris Management Center (DMC). Ensure that the DMC is provided all needed administrative staff and equipment support.

- Coordinate with the PAO to provide a Public Information Officer (PIO) to conduct all media reports on debris operations.
- Coordinate with BSS to ensure clearing of major evacuation routes and access to critical facilities.
- Appoint a Debris Coordinator (DC). Receive regular updates from the DC regarding cleanup progress and any problems encountered or expected. Manage all necessary contracts and/or temporary employees associated with debris removal, reduction, recycling, and disposal activities.
- Communicate timely information to the EOC regarding the status of the debris clearing, removal, reduction, recycling, and disposal operations.
- Coordinate with appropriate County, State, and Federal agencies, including FEMA, USACE, and others. Assure that the City is represented at all debris cleanup meetings.
- Convene emergency debris coordination meetings.

### **C. Debris Coordinator**

The Debris Coordinator (DC) for the City of Los Angeles is responsible for the daily operational control of the DMC staff. The DC will be notified of the severity of the disaster from the EOC. All requests for debris removal or disposal from the EOC staff will have to go through the DC to be reviewed by the DM. Once the DM approves the request, the DC will work with the DM to ensure that appropriate contracts are in place to efficiently and effectively remove the debris. The DC will keep the Debris Manager and DMC staff informed on all ongoing debris management operations through, at a minimum, daily meetings and/or reports. The DC will maintain a daily journal and file on all debris related documents and issues.

At the time of the disaster, BPW will meet with the appropriate Bureau heads to identify the appropriate individual to take on the role of DC. Designation of the DC will depend on the disaster at hand and the employee best qualified to coordinate the debris management process. The DM may appoint an equally qualified person to the role of DC.

The Debris Coordinator's responsibilities will include, but not be limited to, the following:

- Coordinate all Public Works' debris assignments approved by the DM.
- Coordinate debris clearance from evacuation routes and access to critical facilities and other roadways within the City (Phase I).
- Maintain a listing of all available Public Works' equipment and staff identified for possible debris removal, reduction, recycling, and disposal missions. Ensure that required logistical support is available, including cell phone, transportation, etc.
- Provide personnel and equipment to assist in the removal and disposal of debris (Phase II) as directed by the DM.

- Inform the DM of cleanup progress and any problems encountered or expected.
- Record all cost associated with debris removal.
- Implement procedures to monitor and minimize fraudulent activities.

#### **D. Bureau and Department's Responsibilities**

All departments will assign representatives to the Debris Management Center and the EOC to coordinate their department's roles. Fire and Police are the first emergency responders after a disaster and they will request through the EOC to the DMC for debris clearance and/or removal. The debris clearance, removal and disposal will be a field activity that involves all five Bureaus of the Department of Public Works (Bureau of Engineering, Contract Administration, Street Services, Sanitation and Street Lighting). All other City departments will support the DMC in their effort of debris clearance, removal, recycling, and disposal of debris.

During the conduct of debris operations following a disaster, many issues will arise that are not specifically mentioned in this Plan. However, responsibilities are sufficiently defined so that unexpected issues can be assigned and resolved efficiently. Each bureau/department's responsibilities include, but are not limited to, the following:

##### **1. Los Angeles Fire Department**

The Los Angeles Fire Department (LAFD) is fully committed to life safety response in a major disaster. If response routes are impeded by disaster debris, LAFD may attempt to sufficiently clear the roadway to allow access for emergency vehicles. If debris is beyond LAFD's immediate capabilities, LAFD will communicate to the EOC through the chain of command to ensure DPW is notified of the need for debris clearance. LAFD will respond to requests to investigate and manage hazardous materials incidents.

##### **2. Los Angeles Police Department**

The Los Angeles Police Department (LAPD), along with LAFD are the first responders in any type of disaster. LAPD officers will conduct a drive-by assessment of certain pre-determined critical facilities within their patrol district. LAPD may coordinate traffic control at all loading sites and at entrances to and from debris management sites. LAPD may assist in monitoring temporary debris storage and reduction (TDSR) sites to ensure compliance with local traffic regulations. LAPD will also assist with criminal investigations involving Incidents of National Significance.

##### **3. Bureau of Engineering**

The Bureau of Engineering (BOE) is responsible for coordinating impact assessments for all City public structures, immediately following a large-scale disaster. The impact assessments are used to prioritize impacted

areas and resource needs. BOE also provides detailed damage assessments, identifies reconstruction projects, and prepares cost estimates and scopes of work required to rebuild damaged infrastructure.

#### **4. Bureau of Contract Administration**

The Bureau of Contract Administration (BCA) is responsible for the coordination, oversight, and monitoring of all debris removal and disposal operations performed by private Contractors. BCA will provide city inspectors to be stationed at all the debris management sites and landfill disposal site for the purpose of verifying the locations of debris loading and certifying the quantity of material being hauled by the Disaster Debris Removal and Disposal Contractor through the use of load tickets. BCA is also responsible for monitoring the debris management site operations and closeout activities to ensure that the Contractor complies with the Debris Removal and Disposal Contract. BCA will provide input to the PIO on debris cleanup activities, pickup schedules and provide recommendations to the DM on the distribution of City and Contractor work assignments and priorities. In addition, BCA administers all progress payments made to independent contractors working within the City's program.

#### **5. Bureau of Street Services**

The Bureau of Street Services (BSS) is a Department first responder and, consequently, is responsible for emergency debris clearance on essential transportation routes. Its primary mission in Phase I is to clear debris from evacuation routes and access routes to expedite the movement of emergency service vehicles such as fire, police and medical responders. BSS coordinates with the DM for the permanent removal and disposal of all debris deposited along or immediately adjacent to public rights-of-way. If additional assistance is required, BSS can initiate hauling contracts to facilitate the clearance of debris from transportation routes. BSS will also assist BOS in the curbside pick-up of debris.

#### **6. Bureau of Sanitation**

The Bureau of Sanitation (BOS) is also a Department first responder and provides refuse collection and disposal operations necessary to support continued operation of essential facilities used for the reception and care of evacuees, volunteer workers, emergency responders, maintenance and support personnel. BOS will continue to pickup refuse in accordance with current procedures, routes, and removal schedules; however, in the event of a declared emergency BOS operates under a specifically modified procedure. BOS will coordinate with Environmental Affairs Department to establish and permit temporary and permanent sites to accept debris. BOS will be involved with the operating and close-out procedures for temporary debris storage and reduction (TDSR) sites.



## **7. Bureau of Street Lighting**

The Bureau of Street Lighting (BOSL) will work in coordination with BSS and BOS in the clearance and removal of debris from transportation routes.

## **8. Emergency Preparedness Department**

The Emergency Preparedness Department (EPD) is responsible for coordinating the EOC's activation readiness and facilitation prior to and during emergencies. EPD coordinates local emergency declarations with the Mayor's Office during an emergency crisis. EPD also coordinates the City's recovery and reconstruction efforts by implementing the City R&R Plan Policies and Actions with the EOO Divisions, City departments, the EOB, the Mayor, City Council, and other vital agencies to facilitate a quick and efficient restoration of homes, jobs, services, facilities and all the other aspects of normal community life following a major disaster. As the R&R division of the EOO, EPD will lead, with the CAO, the Fast-Track Permit Review Program and the implementation of the Federal Hazard Mitigation Program. EPD's Chief shall work with the other EOO divisions and all appropriate City departments on coordinating the development of recommendations for City policies, a disaster-specific recovery plan, and any proposed legislation for approval by the Emergency Operations Board (EOB), Mayor, and the council. EPD will work with the Department of Public Works to ensure that any policies, plans, and legislation related to debris removal move forward in an efficient, effective, and timely manner.

## **9. Public Affairs Office**

The Public Affairs Office (PAO) will develop a proactive public information management plan and coordinate with other public information agencies to keep the public informed on all debris removal activities and schedules. Immediately after a disaster and continually throughout the removal and disposal operation, the Public Information Officer (PIO) shall arrange public notification of all ongoing and planned debris clearance, removal and disposal activities. Notification should include information bulletins, hotline responses, public service announcements for radio and television, handbills, door hangers and newspaper notices in the language(s) prevalent in the affected communities. Emphasis will place on actions that the public can perform to expedite the cleanup process such as segregating recyclable materials, placing debris at the curbside, and segregating household hazardous waste. Provision should be made to compensate for disruption of normal means of mass communication caused by power outages following a major natural disaster.

## **10. Building & Safety**

The Los Angeles Department of Building & Safety (LADBS) is responsible for providing a safety assessment for structures on designated city-owned properties and private properties after a disaster event. LADBS will coordinate the demolition of buildings that are determined to be a present,

imminent, extreme and immediate hazard or a danger to life or limb, or health or safety through GSD.

**11. Planning Department**

The Planning Department will identify potential temporary debris storage and reduction (TDSR) sites before a disaster strikes, and to consider permitting and pre-approving the use of identified sites for disaster debris. Planning Department can locate sites for staging/transferring debris by evaluating potential sites and by revisiting sites used in the past to see if site conditions have changed or if the surrounding areas have changed significantly to alter the use of the site.

**12. Environmental Affairs Department**

The Environmental Affairs Department (EAD) serves as the Local Enforcement Agency (LEA) and enforces the State's solid waste environmental and public health laws and requirements at the local level. EAD shall work with the appropriate local, state and federal environmental regulatory agencies to ensure debris sites comply with established guidelines. EAD provides necessary environmental clearances and continuing environmental oversight (inspection/monitoring and enforcement) for landfills and temporary staging, storage, reduction, recycling, and processing sites for large amounts of debris. EAD shall also coordinate with BOS and BCA on compliance monitoring for all debris management sites. EAD shall identify and maintain a list of potential sites for temporary staging, storage, reduction, recycling, and processing disaster debris. Each potential site will be evaluated for the maximum tonnage limit required for the response and recovery effort.

**13. Department of Transportation**

The Department of Transportation (DOT) will establish transportation routes for mass debris hauling to dump sites. The Department will also identify truck staging areas for debris hauling operations. Additionally, DOT can implement street closures and provide traffic control at major intersections where truck traffic may severely impact the intersection(s).

**14. Office of the City Administrative Officer**

The Office of the City Administrative Officer (CAO) shall serve as the reimbursement coordinator and will coordinate with the DC on all labor costs, equipment hours, materials/supplies and expenditures related to disaster response and recovery. The reimbursement coordinator will also manage the receipt and submission of all records of debris contractor progress payments through BCA and coordinate with Federal and State agencies to facilitate reimbursement for debris removal activities.

**15. Office of the City Attorney**

The Office of the City Attorney will provide legal council to ensure policies and standards are established and in place prior to a disaster event. The City Attorney will address local issues, such as existing policies, ordinances, resolutions, contracts, or franchise agreements that may affect disaster debris diversion efforts.

**16. General Services Department**

The General Services Department (GSD) will manage and direct the demolition of public and private structures at the request of LADBS. After LADBS conducts a safety assessment and determines the structure is a present, imminent, extreme and immediate hazard or danger to life or limb, or health or safety and issues a notice to proceed with the demolition to GSD, GSD will start the demolition.

**17. Personnel Department**

The Personnel Department is responsible for coordinating volunteers who will assist with clearing, removing and disposing of disaster-related debris. At the request of the Debris Coordinator (DC), Personnel Department will dispatch and coordinate volunteers registered as Disaster Service Workers (DSW's) to assist with debris clearing, removal and disposition. If additional resources are necessary, Personnel Department will determine if appropriate City staff can be reassigned in this capacity or will request that the EOC contact Emergency Network Los Angeles (ENLA), requesting appropriate volunteer staff from its various agencies.

**E. Proprietary Department's Responsibilities**

If the disaster debris is at or around the facilities of the proprietary departments, these departments will have their own operating procedures to clear, remove, and dispose of the debris. The following is a brief description of each proprietary department's procedures:

**1. Los Angeles Department of Water and Power**

The Los Angeles Department of Water and Power (LADWP) will use its own resources to respond to debris removal needs at or around LADWP facilities both within the Los Angeles City jurisdiction and at out-of-town sites. It is anticipated that the LADWP will have sufficient resources to respond without assistance from other City departments.

LADWP should be notified before any water or power infrastructure is removed to prevent unnecessary damage or customer outages. Downed power poles or lines present a hazard that should be handled by LADWP crews only. The Department of Public Works should immediately report this situation to LADWP and standby at the location for public safety until LADWP crews arrive.

LADWP may elect to remove debris in certain situations where critical facilities are located. There may be occasions when it would be permissible for Department of Public Works to remove debris from in or around LADWP facilities or in the vicinity of LADWP infrastructure, but it is not expected that it would be responsible for performing this work.

## **2. Port of Los Angeles (Harbor Department)**

The Port of Los Angeles (POLA), Construction and Maintenance Division will assist the Department of Public Works in gathering all debris within the confines of Port Property. All debris can be brought to a centralized local area, as directed by Public Works, for pickup and delivery to a main dumping site.

POLA Environmental Division maintains contracts with various private companies for the removal of Hazardous Waste and Recycling Issues.

Any requests of mutual assistance should be requested through the EOC in the time of a disaster.

POLA may elect to remove debris in certain situations where critical facilities are located. There may be occasions when it would be permissible for Department of Public Works to remove debris from in or around POLA facilities or in the vicinity of POLA infrastructure, but it is not expected that it would be responsible for performing this work.

## **3. Los Angeles World Airports**

Los Angeles World Airports (LAWA), Construction and Maintenance Services Division will work closely with the Department's Engineering and Project Management Division, (EPMD) other LAWA Divisions, and assisting City Departments to coordinate debris removal and disposal in the event of a disaster. The priorities of ingress for public safety responders, life and safety, and protection of aircraft movement will drive the command/management of this response. The main objective of the debris removal efforts is to clear debris from roadways, buildings, and the airfield as quickly as possible keeping in sight the aforementioned priorities. LAWA will comply with all policies and ordinances established by local jurisdictions which do not conflict with FAA and other federal regulations. This includes proper disposal of debris.

LAWA has internal resources and capability to perform large debris removal operations. If incidents of great significance should exhaust this capability, LAWA will work through City processes for assistance support from other Departments. LAWA will follow the direction under the Incident Command System and/or Emergency Management personnel in receiving support

from various resources including from but not limited to City, County, State, and federal agencies.

To summarize LAWA's debris removal plans, the first priority is to reopen ingress roadways to support emergency services, public health and safety needs. This includes aircraft operational areas on the airport to support inbound air emergency response resources. Simultaneously, efforts to remove debris for rescue efforts will occur and inspection of fuel hazards on the airport. This will be followed with damage assessment, structural stabilization and debris removal that poses a threat to public safety. This includes damage to the FAA Tower, buildings, terminals, bridges, roadways, fueling systems, etc. Efforts will then move to clear debris that impedes business or economic recovery. Coordination of processes will focus on returning affected areas to operational status as soon as possible and maintaining the unaffected areas of the airport. Airports provide a transportation function within communities after a disaster in both the movement of critical disaster supplies and outside emergency personnel response. LAWA's debris removal plans are set to ensure this function can continue in the aftermath of a disaster.

#### **F. Emergency Communications Plan**

General communications during an emergency will adhere to normal methods of communication such as telephone and/or cell phone. Should normal communications be interrupted, alternative methods and back-up systems will be engaged. All PW Emergency Contact Personnel should have a GETS card that will facilitate communication on the telephone or cell phone. Other methods of communication are the 800 MHz radio, satellite telephones, and the media if possible. If all communication systems fail, field runners will be implemented.

#### **G. Health and Safety Plan and Procedures**

The PW's Safety Officers are responsible for coordinating safe work procedures for responders involved in disaster debris removal. The Safety Officers will conduct risk assessments and establish control measures to minimize the hazards employees face when responding to an emergency. Compliance strategies may also require coordination with the Workers Compensation Board (WCB) where a variance may be required for situations that constitute extraordinary circumstances and awareness of requirements for WCB coverage, insurance and liability protection for workers and volunteers. The following issues regarding health and safety are addressed:

##### **1. Communication**

All federally declared disasters or Incidents of National Interest, whether naturally occurring or caused by Weapons of Mass Destruction or Terrorist Activities, will be coordinated through the Incident Command System.

## **2. Identification of Hazardous Materials associated with Construction Materials**

Many buildings and structures were constructed using **Asbestos Containing Materials (ACM)** and/or **Lead Coated/Containing Materials (LCM)**. During demolition and debris removal these materials can become airborne and pose a potential hazard for employee exposure. To ensure employees are not exposed in excess of the **Permissible Exposure Limits (PEL)** for asbestos and lead, the supervisor in charge of the debris removal staff will contact the Safety Engineer from PW or the Safety Administrator from Personnel to conduct an on-site inspection of the material to be removed to ensure that it does not contain ACM and/or LCM. In the event of a catastrophe of National Significance it is very likely that identification of ACM and LCM would be too difficult and time consuming, if not impossible. In this event, the Safety Engineer and/or Safety Administrator will arrange for **Industrial Hygiene (IH)** staff or qualified environmental consultants to conduct exposure assessments to ensure employees are not exposed at or above the Cal-OSHA PEL for asbestos and/or lead. Where exposure exceeds the PEL, the IH staff or environmental consultant will institute administrative controls, engineering controls, work practices and/or special equipment to reduce exposure below the PEL. Work will stop any time any chemicals used or stored in the workplace are encountered during debris removal. The Safety Engineer, IH or environmental consultant will identify or arrange for identification of any and all chemicals found at the worksite as well as arrange for their removal and/or disposal if deemed necessary.

## **3. Personnel Protective Equipment and Worksite Safety**

All normally required PPE such as but not limited to safety glasses, hard hats, gloves, safety vests, steel-toed work boots with steel shanks, dust masks etc. will be worn at all times. All safety procedures that are currently utilized by PW personnel for regular debris removal will be in effect. The supervisor in charge of the debris removal team will be on site and responsible for identifying any and all hazards associated with debris removal not mentioned above and will take steps to ensure the hazards have been corrected or removed prior to proceeding with the work. At no time will supervisors or employees conduct any work that they have not been trained to perform or have not been given the proper equipment to perform. Any time the supervisor encounters a situation that is beyond the scope and capability of his staff he/she will immediately stop work and notify PW management. Management will be responsible for either providing the proper training and equipment for in-house staff to proceed or arrange for qualified contractors to complete the work. It is imperative that safety of the

PW staff is paramount at all times and should never be compromised because of time, budget or any other constraints.

#### **4. Management and Supervisory Responsibility**

Each and every situation involving federally declared disasters is complex and fluid (i.e. ever changing). The above information is only a general guideline and does not include the infinite number of possible safety or health hazards that could arise. It is the responsibility of the PW supervisory staff as well as PW management to ensure that, as situations arise that pose a threat to City of Los Angeles employees, all work will cease immediately until reasonable safety actions have been instituted and/or all feasible hazards eliminated. Additionally, it is imperative that all Federal, State and or Local health and safety regulations are adhered to, to ensure worker safety and reduce liability. In the event that regulations are different from one agency to another, the most restrictive regulation will take precedent.

### **VII. RESPONSE AND RECOVERY OPERATIONS**

DPW is the lead agency responsible for coordinating initial damage assessments for debris clearance immediately following a debris-generating event, in order to prioritize the impacted areas and resource needs. The Damage Assessment Teams will conduct zone-by-zone windshield surveys to identify the type and estimate the amount of debris.

In accordance with the Damage Assessment Annex to the Master Plan, the Department of Public Works will deploy Damage Assessment Teams to the field to assess and map the types of debris and the locations of the debris after a disaster. LADBS and/or GSD will also mobilize their staff to conduct safety inspection of the City's building and structures. During their assessments, the inspectors will estimate the amount of building/property needing demolition. The information collected from the Damage Assessment Teams and the LADBS and GSD inspectors will be relayed to the DMC for assessment of the full scope of the debris clearance, removal and disposal effort.

Debris management operations are divided into two phases:

#### **A. Phase I – Initial Response**

Phase I Initial Response operations will be implemented by BSS immediately after a debris-generating event. The major emphasis during this phase is to simply push debris from the traveled way to the right-of-way or curb to open emergency evacuation routes and roadways to critical facilities and affected neighborhoods. Little or no effort is made to remove debris from the right-of-way. This activity is commonly referred to as Debris Clearance. Response efforts are first directed to activities that protect lives, public health and safety,

such as evacuations and sheltering, fire fighting, utility restoration and clearing roads of hazards (i.e. debris and electrical hazards). Requests for additional assistance in debris clearance will be submitted to the Debris Manager.

Priority for debris clearance is determined by the Debris Manager and will be based upon the following criteria (critical facilities, critical routes, etc.)

1. Immediate evacuation and extrication needs of residents
2. Clearance of emergency access routes for ingress/egress by emergency vehicles (Police Stations, Fire Stations, Hospitals, and EOC)
3. Public Schools used for Shelters
4. Other government and public facilities
5. Access for utility restoration (power substations, booster pump stations, wastewater treatment plants)
6. Secondary roads
7. Private property adversely affecting public welfare

During Phase I, DWP will be responsible to ensure that power lines do not pose a hazard to emergency work crews and to coordinate the response effort with DPW as appropriate. In addition to pre-positioning of DPW crews and rental equipment, City contractors may be directed to proceed with debris clearance. At the discretion of the Debris Manager, each contractor will be given an initial route for clearing and is directed to respond with all due haste, personnel and equipment. Each contractor will report to the appropriate debris contract administration team member administering the contract. In accordance with FEMA guidance, Time & Material contracts may only be used for emergency debris removal during **the first 70 hours** following a disaster.

## **B. Phase II – Recovery**

Phase II Recovery operations consist of the removal, reduction, recycling, processing, and disposal of that debris which is determined necessary to ensure the orderly recovery of the community and to eliminate less immediate threats to public health and safety. If it is apparent during Phase I that the management of debris is beyond the capabilities of local force account, mutual aid agreements and limited contract resources, then immediate actions must be taken to implement, activate, and manage Phase II Recovery operations using standby contractors.

The Debris Manager will be responsible for implementing all Phase II activities that includes multiple, scheduled passes of each critical site, location, or rights-of-way for debris, thus allowing residents to segregate and place debris at the edge of the rights-of-way. Phase II may be quite lengthy as disaster recovery continues until pre-disaster conditions are restored. A media campaign will be implemented encouraging residents to separate the debris and other household hazardous waste for recycling and/or disposal. The residents should be advised that the City will pick-up and dispose of the disaster-related debris if



they are brought curbside. This will allow the City crews to consolidate and pick-up similar types of debris so that full loads of like materials can be brought to source-separated processing stations. All efforts will be made to dispose of debris in the most efficient manner possible.

Phase II activities include:

- Activation of pre-drafted and current contracts.
- Implementation of contracting process. In a declared emergency, the competitive bidding procedures can be waived by Council.
- Notification to citizens of debris removal procedures.
- Activation of TDSRs.
- Removal of debris from rights-of-way and critical public facilities.
- Movement of debris from TDSRs to permanent landfills.

### C. Types of Debris

The following are examples of debris that might be generated by a disaster:

<b>Debris subject to Putrefaction</b>	
<ul style="list-style-type: none"> <li>• Animal corpses: Cattle, pets and wild animals</li> <li>• Food remnants: Meal leftovers or food spoiled as a result of power failure</li> </ul>	
<b>Vegetation</b>	
<ul style="list-style-type: none"> <li>• Leaves and branches</li> <li>• Uprooted shrubs and tree</li> </ul>	
<b>Inert Environmental Debris</b>	
<ul style="list-style-type: none"> <li>• Dirt</li> <li>• Mud</li> </ul>	<ul style="list-style-type: none"> <li>• Rocks</li> <li>• Sand</li> </ul>
<b>Construction Debris</b>	
<ul style="list-style-type: none"> <li>• Acrylic</li> <li>• Asphalt</li> <li>• Blinds</li> <li>• Brick</li> <li>• Carpet</li> <li>• Concrete</li> <li>• Drywall</li> <li>• Electrical wires, lamps, bulbs</li> <li>• Glass and mirror</li> </ul>	<ul style="list-style-type: none"> <li>• Insulation materials (fiberglass, Styrofoam, etc)</li> <li>• Masonry</li> <li>• Metals (steel, iron, aluminum, copper, etc.)</li> <li>• Tiles</li> <li>• Pipes</li> <li>• Plastic</li> <li>• Rubble</li> <li>• Vinyl</li> <li>• Wood</li> </ul>
<b>Appliances, Household Equipment and Furniture</b>	
<ul style="list-style-type: none"> <li>• Beds and mattresses</li> <li>• Upholstered furniture</li> <li>• Sofas</li> <li>• Washing and drying machines, refrigerators, dishwashers, stoves, hot water tanks, furnaces</li> </ul>	<ul style="list-style-type: none"> <li>• Desks, chairs, chests</li> <li>• Lamps</li> </ul>
<b>Personal Items and Objects</b>	
<ul style="list-style-type: none"> <li>• Art work</li> <li>• Books and papers</li> </ul>	<ul style="list-style-type: none"> <li>• Clothing</li> <li>• Cooking utensils, china, glassware</li> </ul>

**Hazardous Wastes**

- |                                  |                                       |
|----------------------------------|---------------------------------------|
| · Asbestos                       | · Oils                                |
| · Biomedical wastes              | · Paints                              |
| · Cleaning agents                | · Pesticides                          |
| · Combustibles                   | · Radioactive substances              |
| · Explosives                     | · Solvents                            |
| · Fertilizers                    | · Lead                                |
| · Computer equipment, telephones | · Other toxic substances or materials |

**VIII. DEBRIS REMOVAL PROCESS**

Debris removal will generally be limited to debris in, upon, or brought to public streets and roads, right-of-ways, city properties and facilities, specifically designated critical private facilities (such as hospitals) and other public facility sites. Processing and disposal of debris will be at approved processing and disposal sites. Residents will be advised to separate waste and debris to the maximum extent practicable to allow for maximum recycling and minimal disposal at landfills.

**A. Public Property/Right-of-Way Debris Removal**

City of Los Angeles is responsible for removing debris deposited on public lands including the rights-of-way. In some cases, where a health and/or safety threat exists, private property owners may move event-related debris to the public right-of-way for removal by the City.

**B. Private Property Debris Removal**

Debris removal from private property is the responsibility of the individual property owner. FEMA assistance is not available to reimburse private property owners for the cost of removing debris from their property; however, if property owners move the disaster-related debris to a public right-of-way, the City can qualify to be reimbursed for the pickup and disposal of the debris. If the debris on private business and residential property is so widespread that public health, safety, and/or the economic recovery of the community is threatened, FEMA may fund debris removal from private property, but it must be approved in advance by FEMA.

**C. Unsafe Buildings**

Care must be exercised to ensure that structures to be demolished are the structures identified by LADBS as a present, imminent, extreme and immediate hazard or a danger to life or limb, or health or safety. The Debris Manager will coordinate with LADBS regarding:

- Demolition of structures. Appendix A has a list of on-call demolition contractors updated by BOE.
- Local law and/or enforcement agencies.
- Historic and archaeological sites.

## 1. Demolition Process

The steps in the demolition process are:

- a. Identify hazardous materials in damaged buildings
- b. Obtain proper city permits
- c. Remove hazardous materials and dispose of them properly
- d. Recycle demolition debris
- e. Demolish building
- f. Remove and transport debris to processing/recycling facility
- g. Remove, transport and dispose of non-processible and/or non-recyclable debris

## 2. Reimbursement

Dangerous structures should be the responsibility of the private property owner to demolish in order to protect the health and safety of adjacent residents. As with debris removal from private property, demolition of private structures requires approval by FEMA prior to start of work and agreement by the local government to save and hold the Federal government free from damages due to performance of the work. Demolition work also requires condemnation by an authorized local official in accordance with State and local law.

### **D. Curbside Pick-up**

Through mass communication, the public will be notified of debris removal schedules and instructions for separation of debris. The PIO will provide the public information regarding pickup times and locations to private property owners so that debris removal activities proceed efficiently. Debris containing hazardous materials or asbestos-containing materials should not be placed on the curbside for pick-up.

## **IX. HOUSEHOLD HAZARDOUS WASTE REMOVAL**

### **A. Household Hazardous Waste (HHW)**

Common household products that contain hazardous materials become HHW when disposed of. Typical HHW includes paints, thinners, used oil, batteries, cleaning products, solvents, fluorescent light bulbs, and pesticides. These HHW should not be disposed of with normal solid waste. HHW will be isolated from the debris and stockpiled for subsequent disposal in accordance with regulations.

Many household items are also considered electronic wastes (e-wastes). Examples of e-waste are computer CRT monitors, CRT televisions, VHS

cassette players, and other electronic appliances, and are also considered “universal wastes” (hazardous wastes).

## **B. Disaster Debris HHW Operations**

It is important for BOS to implement the HHW collection program as soon as possible after a debris-generating event. However, scheduling an event too soon after a disaster may result in a low participation rate. The specific timing of HHW collection events will differ, but sufficient public notification, assessment and monitoring of the recovery efforts are relative factors in the schedule.

Under a Drop-off Point Collection Program:

1. Residents will be encouraged to separate and transport HHW to pre-identified drop-off points managed by the HHW contractor. The Debris Manager will determine the schedule and frequency of the HHW collections.
2. The HHW contractor is responsible for developing a Site Operations Plan for approval by EAD.
3. The HHW contractor will be responsible for developing a site specific Health and Safety Plan for approval by EAD.
4. The HHW contractor is responsible for developing an Emergency Response Plan for approval by EAD.
5. Small amounts of HHW may inevitably be deposited at TDSR sites. The Debris Removal, Reduction, Recycling, and Disposal Contractor will be responsible for separating HHW from other disaster debris received at the site and stored separately in an enclosed and lined area for temporary storage.

## **C. HHW Specific Public Information Program**

This public information program should include disseminating the following information to residents:

1. A description of the drop-off point collection program being implemented
2. The responsible agency for the program with contact person and telephone numbers
3. The locations of the drop-off points
4. The hours of operation
5. A description of the types of HHW being collected at each location
6. Any other relevant information

## **X. CONTRACTS**

Contracting for labor and equipment may be necessary if the magnitude of the disaster and the resultant debris is beyond the capabilities of the City. In the event of a disaster, the city will first rely on current contracts, which have been executed and are ready for implementation and/or pre-drafted contracts that are ready to be finalized, advertised, and awarded. Also, contractors currently working on Public

Works construction projects may be used in debris removal efforts when directed to do so.

Contractors will need to be trained on City's requirement for the debris reduction and disposal procedures. The city will train the contractor on the facilities and the types of debris they each accept. The debris can be taken to either a source separated facility, mixed recycling facility or a disposal facility. The source-separated facility will accept materials such as concrete and asphalt exclusively for recycling. The mixed recycling facility will accept both source-separated material and all mixed debris, from which recyclable materials will be processed for recovery and residuals disposed. The disposal facility will accept materials for landfilling only. Appendix C is the Construction and Demolition Recycling Guide that lists sites accepting construction and demolition waste. BCA monitors will verify that contractors are meeting contract specifications and the loads are delivered to the appropriate location for the debris. Appendix D, Inert Disposal Facilities and Diversion Designations, is a listing of locations handling inert debris.

The following are general requirements to be carefully considered and included in debris-related bid documents and contracts:

- Identify criteria for the work, including criteria for responding time, scope of response, and the time required in between the awarding of the work and mobilizing to initiate the work.
- The scope of work must be well-defined and each intended task specifically addressed. It must be comprehensive and concise with specific language for each task.
- All contracts issued must be in strict compliance with the City's contracting Ordinances and State Labor Laws.

The city may enter into agreements with private contractors for the following types of work:

- Equipment rental for debris clearance from roadways;
- Debris removal services and transportation to TDSR sites;
- Debris removal and disposal site operations;
- Household hazardous waste removal, collection and disposal;
- Debris monitoring services to include field inspections, load site monitoring and disposal site monitoring;
- Fencing and boarding.

#### **A. Reasonable Cost**

FEMA will only reimburse reasonable cost for disaster debris removal. The FEMA definition of "reasonable" is a cost that is both fair and equitable for the type of work being performed. The reasonable cost requirement applies to all labor, materials, equipment, and contract costs awarded for the performance of eligible work.

## B. Types of Contracts

There are three types of contracts that local governments can enter into for reimbursement:

1. Time and Materials (T&M) Contracts are based on the price of labor and equipment when it is operating. T&M contracts may be used for short periods of time immediately after the disaster to mobilize contractors for emergency clearance efforts. They must have a dollar ceiling or a not-to-exceed limit for hours (or both), and should be terminated immediately when this limit is reached. This contract qualifies for reimbursement for the first 70 hours of debris clearance and only when all city and State equipment has been committed elsewhere.
2. Unit Price Contracts are based on weights (tons) or volume (cubic yards) of debris hauled, and should be used when the scope-of-work is not well defined. A Unit Price Contract:
  - a. Ensures a wide range of competition because of the simplicity of the contract.
  - b. Requires contract monitoring at both loading sites and at the disposal sites.
  - c. Has a relatively low risk to the contractor.
  - d. Has a possibility of contract fraud if loading and disposal operations are not closely monitored.
  - e. Is complicated if additional segregation for recycling and disposal is required at the staging sites.
  - f. Requires all trucks to be accurately measured and numbered.
  - g. Requires a significant amount of documentation and accurate accounting.
3. Lump Sum Contracts establish the total contract price using a one-item bid from the contractor. Lump sum contracts can be defined in one of two ways:
  - a. Area method, where the scope of work is based on a one-time clearance of a specified area.
  - b. Pass method, where the scope of work is based on a certain number of passes through a specified area, such as a given distance along a right-of-way.

A Lump Sum Contract:

  - a. Should only be used when there is a clearly defined scope of work, with areas of work and quantities of material clearly identified.
  - b. Requires minimum contract monitoring.
  - c. Shifts most risk to the contractor.
  - d. May result in difficulty to quantify the amount of debris that will be brought to the right-of-way for removal.

- e. Does not require quantities of truckloads to be documented.

### **C. Ineligible Contracts**

FEMA will not provide funding for the following types of contracts:

1. Cost-plus-percentage of cost contracts.
2. Contracts contingent upon receipt of local Government or Federal disaster assistance funding.
3. Contracts awarded to debarred contractors.

### **D. Monitoring Contractors**

The formal monitoring of contractor activities is necessary to ensure satisfactory performance. Monitoring includes the following:

- Verification that all debris picked-up is a direct result of the disaster
- Truck-by-truck inspection to ensure that trucks are fully-loaded
- On-site monitoring of pick-up areas, temporary sites, and disposal areas
- Verification that the contractor is working in its assigned contract areas
- Access control and security of all debris reduction and disposal sites
- Daily labor and equipment inventories
- Monitoring and reporting of overtime hours worked
- Daily recording and reporting of all contract activities
- Work area safety and traffic control
- Proper signage and notification of residents
- Ensuring vehicle and pedestrian access (where reasonable)

### **E. Site Monitors**

Site monitors are responsible for observing and documenting the work being done at two locations: the collection point and the processing/storage site. Monitors should be trained and have a good understanding of eligible and ineligible debris to ensure ineligible debris is not picked up. BCA will provide site monitors from their own staff who will control the load tickets that verify the debris being picked up is eligible under the terms of the contract. BCA monitors will ensure contractors are complying with the contract through training, enforcement of separation at the site, and monitoring of trucks at the facility. The monitors will periodically visit facilities to enforce contract requirements.

BCA will provide the following three types of monitors:

1. Field Inspection Teams (FIT)
  - a. BCA will be responsible for monitoring contractors' performance for debris removal and disposal operations by staffing Field Inspection Teams, unless these monitoring services are also contracted.
  - b. FIT will periodically monitor each TDSR site to ensure that operations are being followed as specified in the contractor scope of work and

contract with respect to local and Federal regulations and the Baseline Checklist.

- c. Each Field Inspector will submit a daily report, such as the USACE Inspector's Quality Assurance Report describing their observations.
- d. FIT will periodically monitor loading sites and prepare daily reports describing their observations.
- e. FIT will also periodically canvass the city and report on the location of any illegal dumping sites.

## 2. Load Site Monitors

- a. The Load Site Monitors will be assigned to each contractor-loading site within the designated Debris Zones.
- b. The Loading Site Monitor will initiate the load tickets that verify the debris being picked up is eligible under the terms of the contract. The following information on the top portion of the load ticket is to be completed by the Loading Site Monitor:
  - i. Date of the work;
  - ii. Location of the work site, including the village, street name, and intersection (if possible);
  - iii. Whether or not the work is being done on a Federal Aid Road;
  - iv. Type of debris such as woody, construction and demolition (C&D), metals, white goods, mixed, household hazardous waste, etc.;
  - v. Driver's name and ID#;
  - vi. Time the truck left the loading site and the odometer reading;
  - vii. Any other pertinent information;
  - viii. Loading Site Monitors will also complete a Record of Loads.
  - ix. Loading Site Monitors will also prepare a Daily Quality Assurance Report and a Productive Equipment Hours Report.

## 3. Disposal Site Monitors

- a. The Disposal Site Monitors will be stationed at all TDSR sites, hardfill sites, recycling facilities, and landfill sites for the purpose of verifying the quantity of material being hauled by the Debris Removal and Disposal Contractor through the use of load tickets.
- b. TDSR site monitors will use the inspection stations at each TDSR site, which allows for a clear view of the load bed of each piece of equipment used to haul debris. The TDSR site contractor is responsible for constructing and maintaining the monitoring stations. TDSR Site monitors will also complete a monitoring report.
- c. Disposal Site Monitors will verify the load and estimate the volume of debris in cubic yards and record the estimated quantity on the pre-printed load tickets. The following sections on the bottom portion of the load ticket needs to be completed by the Disposal Site Monitor:
  - i. Disposal site location
  - ii. Time the truck arrived at the disposal site and the odometer reading
  - iii. The volume of debris in the load in cubic yards



## **F. Load Tickets**

The contractor will only be paid based on the number of cubic yards of material deposited at the disposal site as recorded on the debris load tickets. One part of the load ticket will be given to the truck driver, one part retained by the site monitor and the third part returned to the site inspector through the contractor's authorized superintendent or foreman. The truck driver's portion of the load ticket will be turned in daily to their supervisor. The site monitor's copy will be turned in daily to the coordinator for BCA. Payment for hauling debris will only be approved upon presentation of the duplicate debris load ticket with the contractor's invoice to BCA.

## **XI. TEMPORARY DEBRIS STORAGE AND REDUCTION (TDSR) SITES**

Temporary debris storage and reduction (TDSR) sites are located and designed to temporarily store, segregate, transfer, and reduce debris for reuse, recycling and final disposal. Potential staging sites to be considered during an emergency are landfills, large paved or unpaved lots, industrial properties, sites near rail access, and expansion of existing sites. Appendix B provides a list of closed and open landfill sites.

An advisory committee will be formed to identify additional debris management sites for storage, separation, volume reduction and other processing or disposal of C&D debris or other materials. The committee will develop procedures for the sites and conditions to be implemented for their use, which would be determined at the time of the disaster and would depend on severity of the disaster and local needs identified and paramount would be health, safety and environmental circumstances. The advisory committee should consist of the following department representatives and all applicable departments: Deputy Debris Manager, Environmental Affairs Department, Solid Waste Manager from Bureau of Sanitation, Local Council Office, Building and Safety, Planning Department (if applicable), and United States Army Corps of Engineers (USACE).

### **A. Procedures for Evaluating Potential Sites**

1. Create an interdisciplinary team consisting of representatives at a minimum from DPW, EAD and Planning Department.
2. Sites used in the past should be revisited to see if site conditions have changed or if the surrounding areas have changed significantly to alter the use of the site.
3. Site selection criteria should be as follows:
  - a. Site ownership
    - i. Public lands are preferred and less costly to lease
    - ii. Use private lands only if public sites are unavailable
    - iii. Have attorney review leases to avoid closeout claims

- b. Site Size - Size depends on volume of debris to be collected and planned volume reduction method
- c. Site location - The use of TDSR sites can substantially increase the overall debris clearance costs, since debris is essentially managed twice, i.e., from the generation point to the temporary accumulation site, and from there to final disposal. Strategies to reduce these costs might involve the location of the sites.
  - i. Evaluate the impacts of noise, traffic, and environment
  - ii. Look for ingress/egress at sites to maximize efficiency of traffic flow
  - iii. Sites should be located outside of identifiable or known floodplain and flood prone areas
  - iv. Consider impacts of trucks hauling to site on neighboring communities
  - v. Consider geological site conditions (topography, stable ground, groundwater levels, pervious vs. impervious soils, fractured rock)
  - vi. Prevailing winds which can carry particulates and noise
  - vii. Visibility from the surrounding area
  - viii. Avoid environmentally sensitive areas (wetlands, threatened animal and plant species, public water supplies, critical habitats, historical and archaeological sites, sensitive land uses, etc.)
- d. Neighborhood concerns
  - i. 24-hour light and noise
  - ii. Dust and traffic
  - iii. Smoke from burning activities
  - iv. Runoff from hazardous waste (consider berms and holding ponds)
- 4. Conduct Environmental Baseline Studies for selected sites
  - a. Document existing conditions
    - i. Take photographs and video of the site
    - ii. Take random soil samples
    - iii. Take random water samples
    - iv. Check soil for Volatile Organic Carbons (VOCs)
    - v. Check drainage
    - vi. Obtain ambient air quality data
    - vii. Note important features such as landscaping, structures, fencing, etc.
  - b. Develop mitigation measures to minimize or eliminate impacts
  - c. Establish a monitoring program for:
    - i. Air quality, relative to dust, and particularly if burning will be conducted
    - ii. Water, both surface and ground
    - iii. Fuel spills

## **B. Emergency Waiver of Standards Regulations**

The emergency waiver of standards regulations allows EAD to issue emergency waivers to solid waste facility operators upon request in the event of a state of emergency or local emergency. The regulations are found in

California Code of Regulations, Title 14, Division 7, Chapter 3, Article 1, sections 17008 through 17012. The waiver grants an operator temporary relief from specific state minimum solid waste standards or terms or conditions of the operator's solid waste facilities permit. The waiver applies to the following:

- origin of waste;
  - the rate of inflow for storage, transfer, or disposal of waste;
  - the type and moisture content of solid waste;
  - the hours of facility operation; and
  - the storage time before transfer or disposal of wastes, at a solid waste facility.
- A waiver can also be granted to an operator for the establishment of a locally-approved temporary transfer or processing site, if authorized by EAD or the local enforcement agency.

### **C. Site Preparation and Closeout Procedures**

Environmental assessments of the TDSR should be conducted prior to beginning and after completion of the waste staging and processing operations. The contractor will be responsible for preparing and closing out TDSR sites according to specification in the debris removal and disposal contract. Each TDSR site will eventually be emptied of all material and be restored to its previous condition and use. BCA inspectors, along with EAD, will monitor all closeout activities to ensure the contractor complies with the debris removal, processing, recycling, and disposal contracts.

#### **1. Site Operations**

The following procedures should be initiated once TDSR sites have been activated:

- a. Establish proper buffer zones around the perimeter of the site, but inside the site boundaries
- b. Construct containment berms as necessary and document photographically
- c. Ensure that incoming debris is segregated based on the volume reduction methods at the site:
  - i. Recycling
  - ii. Grinding/Composting
  - iii. Separation
- d. Develop holding areas for HHW and fuels, line these areas with plastic or other approved liners, and fence them
- e. Immediately clean-up fuel and hydraulic spills. Document the incident with the following information:
  - i. When it occurred
  - ii. When it was cleaned up
  - iii. When and where the material was disposed
- f. Photograph operations and monitoring activities weekly
- g. Maintain up-to-date maps and sketches of the site and operations

- h. Implement efficient procedures to keep debris moving into the site, properly separated and reduced, and moved out of the site
- i. Document any changes, tests, problems, actions taken and monitoring visits
- j. Perform on-going volume reduction (on site or removal for disposal/reduction)
- k. Provide nuisance management (dust, noise, etc.)
- l. Provide vector controls (rats, insects, etc)
- m. Provide security (limit access)
- n. Ensure appropriate equipment is available for site operations.

## **2. Site Closeout Procedures**

Once a site is no longer needed, it should be closed and restored to its previous condition and use. Closeout or re-approval of a temporary debris management site should be accomplished within 60 days of receiving the last load of debris. All mixed debris, C&D debris, and debris residue must be removed to approved landfills or recycling sites. If a Contractor has this responsibility, field inspectors will monitor all closeout activities to ensure that the Contractor complies with the Debris Removal and Disposal Contract. Site remediation will go smoothly if baseline data collection and site operation procedures are followed.

The contractor will be responsible for site closeout, but the following procedures should be in place for proper monitoring of the closeout:

- a. All operations have stopped and the site has been cleared and cleaned of all debris.
- b. Current environmental data on soil and water has been compared to baseline data taken before the site was activated.
- c. If private property, conduct environmental assessment with landowner.
- d. Reference appropriate and applicable environmental regulations.
- e. Coordinate with local and officials on requirements and support for implementation of a site remediation plan.
- f. Develop a remediation plan.
- g. Remediation plan reviewed by landowner and EAD.
- h. Execute plan.

## **XII. DEBRIS REDUCTION METHODS**

The guidelines presented in this Section on Debris Reduction Methods are largely from FEMA Debris Management Guide, FEMA 325.

### **A. Volume Reduction by Recycling**

Recycling offers an option to reduce debris before it is hauled to the landfill. Recycling should be given consideration early in a disaster because it may

reduce cost of debris removal and disposal. To begin the recycling program, BOS and EAD should:

1. Locate markets and users
2. Determine the segregation and preparation requirements
3. Determine the tests that are required
4. Determine the process for reducing and hauling
5. Determine mitigation requirements to minimize environmental and public health impacts from the processing and disposal of disaster debris

The materials capable of being recycled include:

1. Metals
    - a. Most white goods and metals are able to be recycled.
    - b. All metals will be delivered to appropriate recycling facilities by the Debris Removal, Reduction, Recycling and Disposal Contractor
  2. Clean Vegetative Debris
    - a. Vegetative debris can be grounded or chipped into mulch.
  3. Construction materials. Concrete or other building materials can be used for other purposes if there is a need for them. The materials also may be shredded to reduce the volume and then used as a cover for landfills.
- Reusable Materials

## **B. Volume Reduction by Grinding and Chipping**

1. The resulting product of the chipping and grinding operation may be used as a landfill product, used as topsoil, or used for residential applications.
2. This method generally reduces volume of debris by 75% (4 to 1)
3. The mulch also must remain free of paper and plastic if used for agricultural purposes.
4. The following information is for the use of mulch as an agricultural product:
  - a. Size: Average size of wood chips is not to exceed four inches in length and one half inch in diameter.
  - b. The debris reduction rate for moderately contaminated debris is 100 to 150 cubic yards per hour and when the debris is relatively clean it is 200 to 250 cubic yards per hour.
  - c. Contaminants: The contamination rate for material other than wood products should be less than ten percent of the mulch. Eliminate plastics completely. Use rake loaders to pick up debris because normal loaders pick up earth, which is part of the contaminant list and harms the chipper.
5. Tub grinders are ideal for use at TDSR sites due to high volume capacity.
6. Mulch piles should be no higher than 15 feet

### **XIII. SPECIALIZED DEBRIS OPERATIONS**

Some waste materials or other matter mixed in with disaster debris may require special treatment in terms of separation or disposal. Following is a brief description of the special wastes and the handling procedure:

#### **A. WMD Debris**

The handling and disposal of debris generated from a Weapons of Mass Destruction (WMD) or terrorism event may exceed the capabilities of the City and may require immediate Federal assistance. Normally, a WMD or terrorism event will, by its very nature, require all available assets and involve many more State, Federal and county departments and agencies. The nature of the waste stream as well as whether or not the debris is contaminated will dictate the necessary cleanup and disposal actions. Debris handling considerations that are unique to this type of event include:

- Much of the affected area will likely be a crime scene. Therefore, City and Federal law enforcement officials may direct debris to a controlled debris management site for processing for evidence, recovery of human remains, and further analysis before the debris is “released” for normal debris reduction, recovery, processing, recycling, and disposal.
- The debris may be contaminated by chemical, biological, and/or radiological contaminants. If so, the debris will have to be stabilized, neutralized, containerized, or subjected to other processes to insure safe handling before disposal. The possibility exists for multiple risks to exist at one time, for example, both chemical and radiological contamination. In such an occurrence, the operations may be under the supervision and direction of a Federal agency and one or more specialty contractors retained by that agency in support of an applicable ESF.
- The presence of contamination will influence the need for pretreatment (decontamination), packaging, and transportation.
- The type of contaminant(s) will dictate the required capabilities of the personnel working with the debris. Certain contaminants may preclude deployment of resources that are not properly trained or equipped.

#### **B. Hazardous Material - Asbestos**

Asbestos is a mineral commonly used in the past for thermal insulation and fireproofing in homes and buildings. Buildings constructed prior to 1978 may contain asbestos, but even buildings constructed after 1978 can contain some asbestos. When asbestos materials are disturbed or damaged, small fibers can float in the air and be inhaled. These fibers are too small to be seen and can easily pass through the filter of a normal vacuum cleaner and get back into the air.

If a building containing asbestos is demolished, asbestos may be mixed with the rubble. Federal, state and local requirements govern the removal of asbestos or suspected asbestos-containing material including the demolition or renovation of structures where asbestos is present. Unless materials containing asbestos is handled properly, asbestos can become airborne and pose a public health and safety hazard. An advisory committee will be formed to develop procedures for handling and disposal of the asbestos-containing materials. A list of hazardous waste facilities that may accept hazardous waste is provided in Appendix E, California Commercial Offsite Hazardous Waste Facilities, and on the Department of Toxic Substances Control's (DTSC) website. The advisory committee will consist of the following department representatives and all other applicable departments: Debris Manager, LA County Public Health Safety Officer, Los Angeles Fire Department, DTSC, Personnel Department-Industrial Hygienist, and Environmental Protection Agency.

### **C. Animals**

The handling and disposal of animal carcasses will follow normal procedures in which BOS will respond to requests to pick up and dispose of the dead animal in accordance with regulations and procedures. The Department of Animal Services may receive calls regarding dead animals and they will forward this information to BOS.

If animals are found alive or injured among the debris piles, Animal Services will be contacted to care for the animals. Animal Services will not enter the debris area unless it is declared safe to do so.

## **XIV. DOCUMENTATION**

CAO is the lead department responsible for proper documentation of debris removal, recycling, processing, recycling, and disposal procedures to ensure FEMA reimbursement. CAO will provide training to appropriate personnel working on reimbursement and will coordinate with FEMA on all documentations.

Documentation is a critical component in support of contractor invoices and in justifying FEMA's reimbursement policy. Load ticket disposition and debris monitoring activities are the major tools that the City must employ in order to adequately document debris management activities for FEMA reimbursement. Required documentation includes the source of the material, the weight or volume of the material, the disposal cost, and salvage value remitted to the local government.

- Records need to be auditable. Lack of proper documentation can jeopardize or delay FEMA funding.
- Include a clause for termination for convenience - this will provide the city with option to cancel the contract for any reason.
- Define a reasonable period of performance.

- Base the contract on an estimate of debris removal services prepared by the local planning staff, do not rely on contractor estimates.

## **XV. ASSISTANCE/MUTUAL AID**

If disaster-related debris removal and disposal operations are beyond the capability of the City to perform or contract for the work, additional resources may be called upon to assist in the management of disaster debris. Local, state and federal resources are available to assist in debris management. In accordance with Public Works' MasterPlan Annex, the Director of Street Services can coordinate for mutual aid resources to assist in disaster debris management. In addition, State and Federal assistance are available, if needed. In such instances, FEMA will give to the USACE a mission assignment to prepare, execute, and monitor contracts for debris operations. Typically, when a mission is assigned by FEMA, the USACE will provide a liaison to the EOC when activated. This liaison will serve as an advisor to EOC staff providing advice as needed and ensuring that USACE is prepared to respond when tasked. USACE will alert a Debris Planning and Response Team (PRT) and the Advance Contracting Initiative (ACI) Contractor under contract for that area and have those resources ready to respond when a mission assignment is authorized. Once USACE receives a mission assignment from FEMA, the management groups for both the PRT and ACI contractor will be available to meet with the DM and other representatives to conduct contingency planning as required.

## **XVI. PLAN TRAINING & MAINTENANCE**

BPW will conduct annual workshops and/or trainings on disaster debris management. All departments and staff with a role in debris management process will be requested to attend the workshop. The workshop will facilitate a coordinated approach to response and recovery after a disaster. The key objective of the workshop is to present the plan and to train the employees on the objectives of the Debris Management Plan. Training sessions will be conducted on an ongoing basis to familiarize staff with their role in the disaster debris management process.

Department of Public Works is responsible for the annual updates and maintenance of the Debris Management Plan. It will be the responsibility of each tasked department and agency to update its respective portion of the Plan and ensure that any limitations and shortfalls are identified and documented, and work-around procedures developed, if necessary.



## **APPENDIX A**

### **On-Call Demolition Contractors**

Bureau of Engineering  
Bureau of Contract Administration  
Joint Report No. 1

March 14, 2007  
CD Nos. All

**REQUEST FOR AUTHORITY TO EXECUTE AGREEMENTS FOR THE DEPARTMENT OF PUBLIC WORKS (DPW) - BUREAU OF ENGINEERING (BOE) ON-CALL DEMOLITION CONTRACTORS LISTS FOR PUBLIC WORKS PROJECTS**

**RECOMMENDATIONS**

1. Approve the two lists of qualified demolition contractors for the Department of Public Works - Bureau of Engineering On-Call Demolition Program.
2. Authorize the City Engineer to continue to administer the agreements for the Department of Public Works - Bureau of Engineering On-Call Demolition Contractors Lists for As-Needed Demolition Services.
3. Approve this report with the transmittals and execute the attached Agreements for As-Needed Demolition Services between the City of Los Angeles and the qualified demolition contractors.
4. Upon execution, request the City Clerk to attest and certify the five originals of each Agreement. The City Clerk and the Board will each retain one original of the five Agreements. The remaining three original Agreements will be returned to the Bureau of Engineering, Project Award and Control Division (Contact: Ralph Shovlin at (213) 847-0621).

**TRANSMITTALS**

1. Bureau of Engineering and Contract Administration Joint Report No. 3 adopted on May 31, 2006 authorizing the City Engineer to distribute and advertise the Request for Qualifications (RFQ) for the On-Call Demolition Contractors Lists.
2. One copy of the RFQ.
3. Five copies each of the Agreements between the City of Los Angeles and the eleven contractors.

**DISCUSSION**

***Background***

On May 31, 2006, the Board gave BOE the authority to advertise the DPW - BOE On-Call Demolition Contract Program. The contractors will perform demolition work on an as-needed basis for DPW projects with estimated values between \$50,000 and \$3,000,000. This list of approved contractors will be available for use on any demolition project identified by the BOE.

The on-call lists will provide a competitive pool of contractors that are qualified to perform demolition work. The contractors will be required to develop and implement a

## Page 2

Waste Management Plan and be proficient in sustainability issues and on-site recycling. Contractors will be required to address hazardous waste issues of asbestos and lead paint abatement as needed for some project task orders. The on-call lists will allow the City to quickly hire demolition contractors to demolish structures including abandoned properties that become nuisances to the surrounding communities.

Because BOE staff expects that some of the project task orders awarded under this program will be \$100,000 and less, and others will be greater than \$100,000, the RFQ was developed to create two lists of demolition contractors, one for each cost range. All contractors who meet the general technical requirements of appropriate licenses, insurance bonding, etc. will be eligible to be placed on the list for Projects less than \$100,000. Only contractors that also successfully performed a Good Faith Effort (GFE) outreach will be eligible to bid on project task orders valued at greater than \$100,000.

***Review of Compliance with Requirements***

A total of eleven firms submitted Statements of Qualifications (SOQs) in response to the RFQ. Contractors were required to conduct their GFE outreach using the Mayor's Business Assistance Virtual Network (BAVN) as part of the RFQ process. The SOQs were reviewed and evaluated by BOE and Bureau of Contract Administration (BCA) staff.

Seven of the firms passed the GFE review for compliance with the City's Minority, Women and Other Business Enterprise Subcontractor Outreach Program. They also complied with all other requirements of the RFQ. Therefore, these seven firms will be eligible to bid on project task orders greater than \$100,000.

1. AES Allied Industries Inc., dba, Allied Environmental Services.
2. CST Environmental, Inc.
3. Interior Demolition, Inc.
4. J & G Industries, Inc.
5. National Demolition Contractors.
6. T & M Construction.
7. William L. Olson, Inc.

As mentioned above, the GFE Outreach Program is not a requirement for contracts less than \$100,000. All of the firms complied with all of the other requirements of the RFP. Therefore, all eleven firms will be eligible to bid on project task orders less than \$100,000.

1. AES Allied Industries Inc., DBA Allied Environmental Services.
2. CST Environmental, Inc.
3. Interior Demolition, Inc.
4. J & G Industries, Inc.
5. K & H Construction, Inc.
6. National Demolition Contractors.
7. Specialized Environmental, Inc.
8. T & M Construction.
9. Three D Service Company, Inc.
10. Todd Construction & Demolition.
11. William L. Olson, Inc.

March 14, 2007

Page 3

***Future Open Enrollment***

An enrollment period may be opened at the discretion of the City Engineer during the life of the Agreements if the City Engineer determines that additional firms are needed for this program.

***Administration Of The On-Call Demolition Agreements***

For the previous on-call demolition contract, the Board of Public Works delegated the authority to administer the project task orders issued under the on-call demolition Agreements to the City Engineer with oversight by the Board. BOE recommends that the Board delegate the same authority to the City Engineer for this Agreement. The following steps outline the procedure required to award project task orders under this Agreement:

1. BOE prepares the bid documents for the demolition project task order and coordinates the bid opening date at the Board with the Board staff.
2. BOE notifies the contractors eligible to bid on the project task order by fax.
3. The contractors pick up the bid documents from the Plan Distribution Counter in BOE or receives them electronically. BOE will forward a copy of the bid documents to BCA for BCA's records and for scheduling inspections.
4. Contractors submit their bids to the Board.
5. Bids are opened and read by the Board Executive Officer or Executive Officer staff at a special meeting scheduled by the Board staff.
6. The Board Executive Officer or their designee reads the project task order bids received at the next Board meeting.
7. BOE analyzes project task order bids to determine the lowest responsive bid. For project task orders greater than \$100,000, contractors must use their approved list of subcontractors for any subcontractor work.
8. BOE prepares a construction order that is signed by the contractor.
9. BOE delivers the signed construction order to the Board for signature by the Board President or two Board members. The construction order is then delivered to the City Attorney for signature.
10. The contractor submits all required documents to the Board staff to ensure that bonds and insurance are up to date and in effect.

Page 4

11. The Board staff notifies BOE that the contractor's bonds and insurance are approved and that the construction order is signed by the Board and the City Attorney.
12. BOE issues the Notice to Proceed to the contractor and sends a copy to BCA.
13. The contractor starts work on the project task order within five working days.

***Term of Agreement***

The Agreements will run for a period of five years from the date that they are attested by the City Clerk.

***Contractor Responsibility Ordinance***

As required by Article 14, Chapter 1, Division 10 of the Los Angeles Administrative Code, all contractors selected for the on-call lists are subject to compliance with the requirements specified in the City of Los Angeles Contractor's Responsibility Ordinance Number 173677.

***Contractor Evaluation***

The Project Manager from BOE and the Inspector from BCA shall submit Contractor Evaluation Reports to BCA after each task order is completed as required by Article 13, Chapter 1, Division 10, of LACAC.

**STATUS OF FINANCING**

The Agreements with the selected demolition contractors do not have a single, specific, source of funds attached to them. Funds for each project task order issued under the Agreement will be identified and encumbered prior to issuing the Notice to Proceed to the contractor.

***Minority Business Enterprise/Women Business Enterprise/Other Business Enterprise (MBE/WBE/OBE) Subcontractor Outreach Program***

BOE staff expects that most project task orders valued at greater than \$100,000 will be issued with anticipated participation levels of MBE/WBE subcontractors set at 8 percent and 3 percent respectively. It is anticipated that the Mandatory Subcontracting Minimum will be set at 15 percent for most project task orders. The MBE/WBE/MSM anticipated participation levels will not apply for project task orders bid estimated under \$100,000. However, contractors are encouraged to utilize MBE/WBE subcontractors where feasible. Submitting bids from subcontractors that are not on the contractor's list of approved subcontractors may result in the contractor's project task order bid being determined to be non-responsive.

Three D Service Company did not submit Good Faith Documentation. K & H Construction, Specialized Environmental and Todd Construction & Demolition submitted the documentation ,but failed to pass their Good Faith Effort evaluation; therefore, staff recommends that these four firms be deemed non-responsive for contracts over \$100,000. However, the RFQ states that they may still work on projects that are less than \$100,000.

March 14, 2007

Page 5

Gender/Ethnicity Codes:

AA = African American	HA = Hispanic American
SAA = Subcontinent Asian American	APA = Asian Pacific American
C = Caucasian	NA = Native American
M = Male	F = Female

The MBE/WBE/OBE subcontractor participation for Allied Industries, Inc. dba Allied Environmental is as follows:

List of Potential Subcontractors	Gender/ Ethnicity	MBE/WBE/ OBE
A-1 Steel Fence Co., Inc.	M/HA	MBE
A-T Trucking	M/HA	MBE
Ayala Boring, Inc.	M/HA	MBE
Black Gold Industries	M/APA	MBE
CMM Trucking, LLC	F/AA	MBE/WBE
D.J. Garcia Trucking Co. Inc., dba, D.J. Trucking Co.	M/HA	MBE
DripStop	F/C	WBE
Excelsior Elevator Corporation	F/APA	MBE/WBE
OST Trucks and Cranes, Inc.	M/HA	MBE
United Pumping Service, Inc.	M/HA	MBE
United Traffic Services, dba, Blue Sky Remediation	F/HA	MBE/WBE
A+ Superior Sanitation, Inc.		OBE
Avelar Trucking		OBE
Beacon Fire & Safety, LP		OBE
Calvada Environmental Services, Inc.		OBE
Dixon Trucking and Demolition		OBE
Environmental Contractors Transportation, Inc. (ECTI)		OBE
Environmental Data Management		OBE
JDML, Inc. dba Standard Industries		OBE
McCormick & Gaul, Inc., dba, Craftsman Concrete Cutting		OBE
O.C. Vacuum, Inc.		OBE
Skaggs Concrete Cutting, Inc.		OBE
Sweeping Beauty		OBE
V and V Trucking		OBE
Western Fence and Supply Company, dba, Pilgrim Fence Co.		OBE

The MBE/WBE/OBE subcontractor participation for CST Environmental, Inc. is as follows:

<b>List of Potential Subcontractors</b>	<b>Gender/ Ethnicity</b>	<b>MBE/WBE/OBE</b>
A-1 Steel Fence Co., Inc.	M/HA	MBE
Ayala Boring, Inc.	M/HA	MBE
Black Gold Industries	M/APA	MBE
Built Rite Fence Company	M/HA	MBE
C.P.R. Trucking, Inc.	M/HA	MBE
J.O. Horton Trucking, Inc.	M/AA	MBE
Odell's Trucking	M/AA	MBE
OST Trucks and Cranes, Inc.	M/HA	MBE
A+ Superior Sanitation, Inc.		OBE
Advanced Cleanup Technologies, Inc.		OBE
Advanced Security Systems, Inc.		OBE
Burke Enterprises, Inc.		OBE
California Hazardous Services, Inc.		OBE
Calvada Environmental Services, Inc.		OBE
Environmental Data Management (EDM)		OBE
Global Prevention Services		OBE
Pacific Trans Environmental Services, Inc. (PTES)		OBE

The MBE/WBE/OBE subcontractor participation for Interior Demolition, Inc. is as follows:

<b>List of Potential Subcontractors</b>	<b>Gender/ Ethnicity</b>	<b>MBE/WBE/OBE</b>
A-1 Steel Fence Co., Inc.	M/HA	MBE
APW Construction, Inc., dba, Ace Fence Co.	M/HA	MBE
Black Gold Industries, Inc. (BGI)	M/APA	MBE
Shenkel Trucking, Inc.	F/APA	M/WBE
United Pumping Service, Inc.	M/HA	MBE
United Traffic Services, dba, Blue Sky Remediation	F/HA	M/WBE
All Cities Fence Co.		OBE
BDC Special Waste Services		OBE

March 14, 2007

Page 7

The MBE/WBE/OBE subcontractor participation for J & G Industries, Inc. is as follows:

<b>List of Potential Subcontractors</b>	<b>Gender/ Ethnicity</b>	<b>MBE/WBE/OBE</b>
A-1 Steel Fence Co., Inc.	M/HA	MBE
American Remedial Technologies	M/HA	MBE
APW Construction, Inc., dba, Ace Fence Co.	M/HA	MBE
Ayala Boring, Inc.	M/HA	MBE
Black Gold Industries, Inc.	M/APA	MBE
DripStop	F/C	WBE
Ebony's Immaculate Cleaning Services	M/AA	MBE
Greg Bell Trucking, Inc.	M/AA	MBE
J.O. Horton Trucking, Inc.	M/AA	MBE
John C. Payne	F/C	WBE
Jose Rangel, dba, Rangel Trucking	M/HA	MBE
Odell's Trucking	M/AA	MBE
United Pumping Service, Inc.	M/HA	MBE
World Wide Equipment Rental	F/C	WBE
A+ Superior Sanitation, Inc.		OBE
Advanced Cleanup Technologies, Inc.		OBE
Air Cleaning Systems		OBE
Avelar Trucking		OBE
BMW Environmental Services Corp.		OBE
California Hazardous, Inc.		OBE
Carll Backhoe, Inc.		OBE
C&M Resources, Inc.		OBE
Environmental Data Management		OBE
G. O. Rodriguez Trucking		OBE
Gittens Environmental & Engineering, Inc.		OBE
Global Prevention Services		OBE
Gonet, Inc.		OBE
HydroPressure Cleaning, Inc.		OBE
Mel Smith Electric, Inc.		OBE
NRC Environmental Services, Inc.		OBE
O.C. Vacuum, Inc.		OBE
PSC Industrial Services Group		OBE
RC Grading, Inc.		OBE
Tri Span, Inc.		OBE



The MBE/WBE/OBE subcontractor participation for National Demolition Contractors is as follows:

<b>List of Potential Subcontractors</b>	<b>Gender/Ethnicity</b>	<b>MBE/WBE/OBE</b>
American Remedial Technologies	M/HA	MBE
ATE Environmental, Inc.	M/HA	MBE
C.P.R. Trucking, Inc.	M/HA	MBE
DripStop, Inc.	F/C	WBE
United Pumping Service, Inc.	M/HA	MBE
United Traffic Services, dba, Blue Sky Remediation	F/HA	M/WBE
World Wide Equipment Rental	F/C	WBE
A+ Superior Sanitation, Inc.		OBE
A-Throne Co., Inc.		OBE
Absolute Abatement & Demolition		OBE
ADS Environment & Construction, Inc.		OBE
Ancon Marine, Inc.		OBE
Calvada Environmental Services, Inc.		OBE
California Waste Services		OBE
Concrete Coring Co.		OBE
Ecology Auto Parts		OBE
Envirocon, Inc.		OBE
Global Prevention Services		OBE
Golden State Fence Company		OBE
King Fence, Inc.		OBE
LA County Sandbags, Inc.		OBE
Matrix Environmental, Inc.		OBE
NRC Environmental Services, Inc.		OBE
Ocean Blue Environmental Services, Inc.		OBE
Paramount Scaffold, Inc.		OBE

March 14, 2007

Page 9

The MBE/WBE/OBE subcontractor participation for T & M Construction is as follows:

<b>List of Potential Subcontractors</b>	<b>Gender/Ethnicity</b>	<b>MBE/WBE/OBE</b>
A-1 Steel Fence Co., Inc.	M/HA	MBE
ATE Environmental, Inc.	M/HA	MBE
Greg Bell Trucking, Inc.	M/AA	MBE
Isaac Harris Trucking	M/AA	MBE
J.L.S. Electric	M/NA	MBE
Odell's Trucking	M/AA	MBE
RBE Trucking	M/AA	MBE
Vision Environmental Construction Services	M/AA	MBE
Absolute Abatement & Demolition		OBE
Action Demolition		OBE
Advanced Cleanup Technologies, Inc.		OBE
Chris' Hauling		OBE
RB Electric		OBE
Sirris Abatement		OBE
Southern California Electrical Engineering		OBE
Tri Span, Inc.		OBE

The MBE/WBE/OBE subcontractor participation for William L. Olson, Inc. is as follows:

<b>List of Potential Subcontractors</b>	<b>Gender/Ethnicity</b>	<b>MBE/WBE/OBE</b>
A-1 Steel Fence Co., Inc.	M/HA	MBE
A-T Trucking	M/HA	MBE
American Remedial Technologies	M/HA	MBE
ATE Environmental, Inc.	M/HA	MBE
Ayala Boring, Inc.	M/HA	MBE
CST Environmental, Inc.	M/SAA	MBE
Greg Bell Trucking, Inc.	M/AA	MBE
J.O. Horton Trucking, Inc.	M/AA	MBE
Absolute Abatement & Demolition		OBE
NRC Environmental Services, Inc.		OBE
R.E. Williams & Sons, Inc.		OBE
Tri Span, Inc.		OBE

The Agreements attached to this report and the report itself were reviewed and approved as to form by Christopher Westhoff, Assistant City Attorney.

Page 10

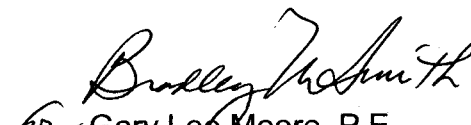
( MPB BMS WFB )

Report Prepared by:

Respectfully submitted,

Project Award and Control Group

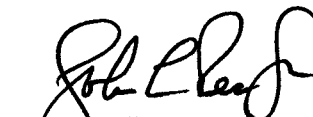
Michael P. Brown, P.E., G.E.  
Group Manager  
Phone No. (213) 848-0646

  
Gary Lee Moore, P.E.  
City Engineer

Compliance Review Performed  
and Approved by:



Hannah Choi, Program Manager  
Office of Contract Compliance  
Bureau of Contract Administration

  
John L. Reamer, Jr.  
Inspector of Public Works

MPB/JZ/RS/01-2007-0021.PAC.ys

Questions regarding this report  
may be referred to:

Writer: Ralph Shovlin  
Phone No:(213) 847-0621  
Fax No. (213) 847-0703  
and/or

Writer: James Zabala,P.E.  
Phone No. (213) 847-0548  
Fax No. (213) 847-0703

**APPENDIX B**  
**NON-ACTIVE LANDFILLS**

Bureau of Sanitation maintains several older City landfills that no longer are active for refuse disposal, but which would be able to temporarily hold debris in the event of an emergency. The sites mentioned below is subject to LEA approval and compliance with state regulations that would only apply after a local disaster has been declared by the Mayor. The debris could not be disposed of permanently at these sites and would eventually have to be removed to other disposal sites.

LANDFILL	ADDRESS	CAPACITY
Lopez Canyon Landfill	11950 Lopez Canyon Rd. Lake View Terrace, CA	24,000 cubic yards (15 acres @ 15 feet depth)
Toyon Canyon Landfill	5050 Mt. Hollywood Dr. Griffith Park, CA	16,000 cubic yards (10 acres @ 15 feet depth)
Gaffey Street Landfill	1400 North Gaffey St. San Pedro, CA	8,000 cubic yards (5 acres @ 15 feet depth)
Sheldon-Arleta Landfill *	12455 Wicks St. Sun Valley, CA	16,000 cubic yards (10 acres @ 15 feet depth)

\* Sheldon-Arleta have the least potential as a TDSR as it will soon be under construction by a private contractor.

## **APPENDIX C**

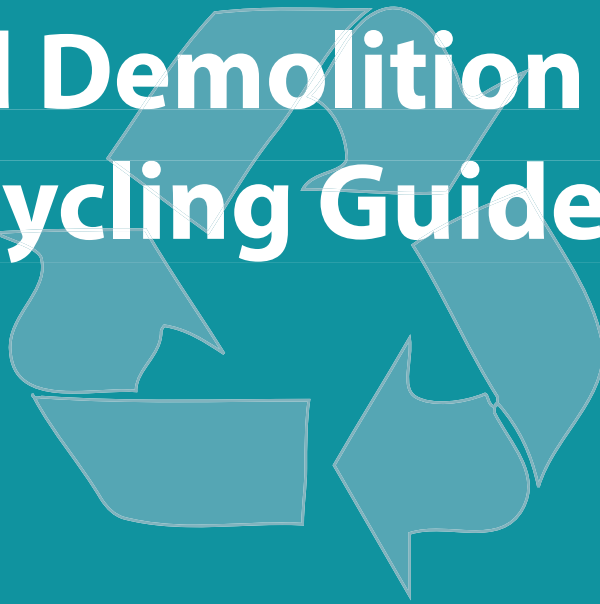
### **Construction and Demolition Recycling Guide**



**City of Los Angeles  
Department of Public Works  
Bureau of Sanitation**



# Construction and Demolition Recycling Guide



**Solid Resources Citywide  
Recycling Division**

*Reduce, Reuse,  
Recycle, and Buy  
Recycled*



**CITY OF LOS ANGELES**

**DEPARTMENT OF PUBLIC WORKS**

**BUREAU OF SANITATION**  
**Rita L. Robinson, Director**

**Enrique C. Zaldivar**  
Executive Officer

**SOLID RESOURCES CITYWIDE RECYCLING DIVISION**

**Neil Guglielmo**  
Division Manager

The Solid Resources Citywide Recycling Division (SRCRD) was established by the Department of Public Works, Bureau of Sanitation, to develop and implement source reduction, recycling and composting programs throughout the City, outside of the single family curbside recycling program. The division provides technical assistance, fosters public/private-recycling partnerships, monitors the AB939 program, manages the collection/disposal programs for Household Hazardous Waste/Used Oil, and creates markets for recyclable materials. To help Los Angeles residents, businesses and institutions avoid “reinventing the wheel,” SRCRD has produced a variety of “how to” guides that provide information on waste reduction, reuse, recycling and composting resources.

Revision Date: 10/5/06

**Phone: (213) 485-2260**  
**Website: [www.lacity.org/san](http://www.lacity.org/san)**



## USING THIS GUIDE

This guide lists many reuse and recycling options for construction and demolition waste, also known as “C & D debris”, and is an excellent planning resource for contractors, construction companies, architects, and homeowners.

Use the section titled Material Recycling Guide to find out which companies handle the material you need to recycle. Each of the sections lists all the companies in the guide that handle a specific material. Once you have the names of some companies, look them up in the section titled Directory. This section is a list of every facility in the guide in alphabetical order with information about the business, as well as location and contact information. Always call the company before taking material there. They may have requirements for the material that is accepted

**Recyclers:** Most of the facilities in this guide are recyclers. They take source-separated material for recycling. Their recycling rate is essentially 100%. Examples of recyclers include companies that take wood for processing into mulch, clean asphalt and concrete for grinding into road base, clean asphalt for recycling into asphalt, or metal for sorting by type to be shipped to foundries. These are just a few examples. These facilities are listed in the guide under each material type that they recycle. In the “Directory” section these facilities have recycling rates of 100%.

Sorting material at the job site for delivery to a recycler can save money. Some material such as metal can be sold if it is separated from other waste. For other separated materials, a recycler will typically charge less than the landfill to dump the material. In addition waste haulers that handle source separated materials are not charged a waste hauling permit fee by the City for that material, which can also reduce costs.

**Certified Mix Debris Processors:** These facilities take in mixed construction and demolition debris for sorting and processing. The recyclable materials resulting from this are sent out to recyclers and end users, and the remainder is disposed of in a landfill. It is often cheaper to take C&D waste to a certified processor because permitted waste haulers are eligible for a rebate for the material taken to these facilities. The higher the facility's recycling rate, the higher the rebate rate.

These facilities have recycling rates that have been certified by the City of Los Angeles in the voluntary Certified Processor program. The list of certified processors and each facility's recycling rate is in this brochure. If a Certified Processor handles more than one type of waste, the mixed C&D material must be taken to the appropriate C&D processing area to take advantage of the recycling rate for C&D material listed in this brochure. In addition, the weight ticket or receipt must also reflect the right information. For the most up to date list of certified processors and their most current recycling rates, please see the web site shown on the cover of this brochure.

### **Inert landfills:**

Inert landfills may be used for the disposal of inert materials including glass, brick, dirt, concrete, rock, asphalt, and similar materials. They do not take greenwaste, wood, cardboard, or household waste. Inert landfills are typically old mines or quarries that are being refilled, or canyons and gullies that are being filled. Material that is taken to an inert landfill does not count as recycled. Some of these inert landfills are: Chandler's Palos Verdes Sand and Gravel Co., Nu-Way Live Oak Reclamation Facility, Reliance Pit No. 2,

Peck Road Gravel Pit, Livingston – Graham, Irwindale Live Oak Av., Strathern Sanitary Landfill, Calmat Class III Disposal Site, and Vulcan Inert Landfill.

## **STRATEGIES TO MINIMIZE WASTE**

### **Reduce:**

Planning can help minimize the amount of scrap material that is generated at a job site. Whenever possible, design the dimensions of the construction project to use standard sized materials. Make very precise material estimates and measurements to minimize on-site waste. Consider using engineered wood products, metal framing, and pre-manufactured components. Plan landscaping designs around slow growth plants to minimize trimming waste.

### **Reuse:**

Consider using deconstruction instead of traditional demolition methods. Deconstruction is the careful disassembly of a structure. It produces more material that can be separated and reused. For instance, asphalt and concrete can be crushed on site and used as the base for a parking lot. Doors, light fixtures, architectural wood work, bricks, appliances and cabinets can sometimes be removed from a building, stored on site and reused in the new structure. Pallets can be reused on site or sent to a pallet recycler. Reusable material can be donated to a local charity or taken to salvage companies. Always call the organization first.

### **Recycle:**

Use the companies listed in this brochure to recycle as much of the C & D debris from your next project as possible. Properly planned construction and deconstruction can result in more source-separated material with a much higher reuse or recycling value than mixed debris. When comparing the cost of different options, be sure to factor in all the costs of each method to get your true cost. Most of the time, even if you have to pay to recycle a material, it will still cost less than landfill disposal.

For information about recycling materials not listed in this brochure or for information about recycling programs for businesses, institutions, apartments or homes, contact SRCRD at the web address and phone number listed on the cover of this brochure.

**This guide does not constitute an endorsement by the City of Los Angeles of any business entity, product, process, or service.**

# Construction and Demolition Material Recycling Guide

Company	City	Zip
<b><i>Certified Mixed Debris Processors</i></b>		
AMERICAN WASTE INDUSTRIES	Sun Valley	91353
CALIFORNIA WASTE SERVICES INC.	Los Angeles	90247
COMMUNITY RECYCLING & RESOURCE RECOVERY, INC.	Sun Valley	91352
DOWNTOWN DIVERSION, INC.	Los Angeles	90021
INTERIOR REMOVAL SPECIALISTS	South Gate	90280
JUSTIS WASTE @ BFI-FALCON REFUSE CENTER	Wilmington	90744
LOONEY BINS, INC.	Sun Valley	91352
MADISON MATERIALS	Santa Ana	92701
<b><i>Cardboard Recyclers</i></b>		
ALPHA RECYCLING INC.	North Hollywood	91605
AMERICAN RECLAMATION, INC.	Los Angeles	90039
AMERICAN WASTE INDUSTRIES	Sun Valley	91353
ARNIE'S SUPPLY SERVICES	Los Angeles	90063
ARNONE RECYCLING CENTER	Long Beach	90805
ASSOCIATE STUDENTS INC RECYCLING CENTER (CSU-LONG BEACH)	Long Beach	90815
BURBANK RECYCLING CENTER	Burbank	91502
CALIFORNIA WASTE SERVICES INC.	Los Angeles	90247
COMMUNITY RECYCLING & RESOURCE RECOVERY, INC.	Sun Valley	91352
DOWNTOWN DIVERSION, INC.	Los Angeles	90021
GOOD EARTH RECYCLING CENTER	Lakewood	90712
INTERIOR REMOVAL SPECIALISTS	South Gate	90280
JUSTIS WASTE @ BFI-FALCON REFUSE CENTER	Wilmington	90744

<b>Company</b>	<b>City</b>	<b>Zip</b>
KRAMER METALS, INC.	Los Angeles	90001
LOONEY BINS, INC.	Sun Valley	91352
MADISON MATERIALS	Santa Ana	92701
PALMDALE RECYCLING, INC.	Palmdale	93550
POMONA VALLEY RECYCLING CENTER	Pomona	91766
VALLEY RECYCLING CENTER	Chatsworth	91311
WEST COAST PALLET, INC.	Pomona	91766
<b><i>Carpet Recyclers</i></b>		
AMERICAN WASTE INDUSTRIES	Sun Valley	91353
DOWNTOWN DIVERSION, INC.	Los Angeles	90021
HABITAT FOR HUMANITY RESTORE	Oxnard	93036
INTERIOR REMOVAL SPECIALISTS	South Gate	90280
LOONEY BINS, INC.	Sun Valley	91352
MADISON MATERIALS	Santa Ana	92701
<b><i>Drywall, Gypsum, or Wallboard Recyclers</i></b>		
AMERICAN WASTE INDUSTRIES	Sun Valley	91353
CALIFORNIA WASTE SERVICES INC.	Los Angeles	90247
COMMUNITY RECYCLING & RESOURCE RECOVERY, INC.	Sun Valley	91352
DOWNTOWN DIVERSION, INC.	Los Angeles	90021
HABITAT FOR HUMANITY RESTORE	Oxnard	93036
INTERIOR REMOVAL SPECIALISTS	South Gate	90280
JUSTIS WASTE @ BFI-FALCON REFUSE CENTER	Wilmington	90744
LOONEY BINS, INC.	Sun Valley	91352
MADISON MATERIALS	Santa Ana	92701
WEST COAST PALLET, INC.	Pomona	91766

Company	City	Zip
<b><i>Glass Recyclers</i></b>		
CALIFORNIA WASTE SERVICES INC.	Los Angeles	90247
HABITAT FOR HUMANITY RESTORE	Oxnard	93036
INTERIOR REMOVAL SPECIALISTS	South Gate	90280
MADISON MATERIALS	Santa Ana	92701
<b><i>Inert Material (Asphalt, Concrete, Brick, Slump Stone, Rock) Recyclers</i></b>		
25TH STREET RECYCLING	Los Angeles	90058
AMERICAN WASTE INDUSTRIES	Sun Valley	91353
AMH RECYCLING	SUN VALLEY	91352
CALIFORNIA WASTE SERVICES INC.	Los Angeles	90247
CHANDLER'S SAND & GRAVEL CO	Rolling Hills Estate	90274
COMMUNITY RECYCLING & RESOURCE RECOVERY, INC.	Sun Valley	91352
DAN COPP CRUSHING CORPORATION	Anaheim	92807
DOWNTOWN DIVERSION, INC.	Los Angeles	90021
HABITAT FOR HUMANITY RESTORE	Oxnard	93036
HANSON AGGREGATES	Long Beach	90805
INTERIOR REMOVAL SPECIALISTS	South Gate	90280
JUSTIS WASTE @ BFI-FALCON REFUSE CENTER	Wilmington	90744
LOONEY BINS, INC.	Sun Valley	91352
MADISON MATERIALS	Santa Ana	92701
NEWMAN AND SONS, INC.	Sun Valley	91352
SIMI VALLEY BASE, INC.	Simi Valley	93065
SLSN, INC.	Monrovia	91017
TAPO ROCK AND SAND, INC.	Simi Valley	93065
VALLEY BASE MATERIALS, INC	Sun Valley	91352

Company	City	Zip
<b><i>Red Clay Brick Recyclers</i></b>		
AMERICAN WASTE INDUSTRIES	Sun Valley	91353
ARCHITECTURAL DETAILS	Pasadena	91107
CALIFORNIA WASTE SERVICES INC.	Los Angeles	90247
COMMUNITY RECYCLING & RESOURCE RECOVERY, INC.	Sun Valley	91352
DOWNTOWN DIVERSION, INC.	Los Angeles	90021
FREEWAY BUILDING MATERIALS	Los Angeles	90023
HABITAT FOR HUMANITY RESTORE	Oxnard	93036
INTERIOR REMOVAL SPECIALISTS	South Gate	90280
JUSTIS WASTE @ BFI-FALCON REFUSE CENTER	Wilmington	90744
LOONEY BINS, INC.	Sun Valley	91352
MADISON MATERIALS	Santa Ana	92701
SIMI VALLEY BASE, INC.	Simi Valley	93065
SLSN, INC.	Monrovia	91017
<b><i>Salvage and Reuse Organizations</i></b>		
ANOTHER PALLET CO	Long Beach	90813
ARCHITECTURAL DETAILS	Pasadena	91107
DOWNTOWN DIVERSION, INC.	Los Angeles	90021
FREEWAY BUILDING MATERIALS	Los Angeles	90023
HABITAT FOR HUMANITY RESTORE	Oxnard	93036
INTERIOR REMOVAL SPECIALISTS	South Gate	90280
LOONEY BINS, INC.	Sun Valley	91352
OLD PASADENA VINTAGE LIGHTING	Pasadena	91107
RC PALLET INC.	Lynwood	90262
S&G PALLETS, INC.	Los Angeles	90021

Company	City	Zip
WEST COAST PALLET, INC.	Pomona	91766
<b><i>Scrap Metal Recyclers</i></b>		
ACTION SALES & METAL CO, INC.	Wilmington	90744
AMERICAN RECLAMATION, INC.	Los Angeles	90039
AMERICAN WASTE INDUSTRIES	Sun Valley	91353
ARNONE RECYCLING CENTER	Long Beach	90805
ASCO METALS	Santa Fe Springs	90670
ASSOCIATE STUDENTS INC RECYCLING CENTER (CSU-LONG BEACH)	Long Beach	90815
ATLAS IRON & METAL COMPANY	Los Angeles	90002
BURBANK RECYCLING CENTER	Burbank	91502
CALIFORNIA METALS RECYCLING	South Gate	90280
CALIFORNIA WASTE SERVICES INC.	Los Angeles	90247
CENTRAL RECLAMATION	Los Angeles	90023
COMMUNITY RECYCLING & RESOURCE RECOVERY, INC.	Sun Valley	91352
DOWNTOWN DIVERSION, INC.	Los Angeles	90021
G HARRIS INTERNATIONAL, INC.	Wilmington	90748
GOOD EARTH RECYCLING CENTER	Lakewood	90712
HARRY NADEL IRON & METAL	Los Angeles	90011
IDEAL METAL & SALVAGE CO.	Gardena	90248
INTERIOR REMOVAL SPECIALISTS	South Gate	90280
JOSEPH LEVIN & SONS	Huntington Park	90255
JUSTIS WASTE @ BFI-FALCON REFUSE CENTER	Wilmington	90744
KRAMARS IRON & METAL, INC.	Sun Valley	91352
KRAMER METALS, INC.	Los Angeles	90001
LOONEY BINS, INC.	Sun Valley	91352

<b>Company</b>	<b>City</b>	<b>Zip</b>
MADISON MATERIALS	Santa Ana	92701
NATIONAL METALS & SURPLUS	Lancaster	93534
NUMBER 1 RECYCLING / NEW HORIZON SALVAGE	Sun Valley	91352
P&T METALS, INC.	South El Monte	91733
PALMDALE RECYCLING, INC.	Palmdale	93550
POMONA SCRAP METAL	Pomona	91766
POMONA VALLEY RECYCLING CENTER	Pomona	91766
STANDARD METALS RECYCLING	Long Beach	90503
VALLEY RECYCLING CENTER	Chatsworth	91311
WEST COAST PALLET, INC.	Pomona	91766
<b><i>Wood Pallet Recyclers</i></b>		
ANOTHER PALLET CO	Long Beach	90813
ARNIE'S SUPPLY SERVICES	Los Angeles	90063
CENTRAL CITY PALLETS, INC.	Los Angeles	90021
JUSTIS WASTE @ BFI-FALCON REFUSE CENTER	Wilmington	90744
RC PALLET INC.	Lynwood	90262
S&G PALLETS, INC.	Los Angeles	90021
WEST COAST PALLET, INC.	Pomona	91766
WEST COAST PALLET, INC.	Pomona	91766
<b><i>Wood Waste Recyclers</i></b>		
AMERICAN WASTE INDUSTRIES	Sun Valley	91353
ANOTHER PALLET CO	Long Beach	90813
ARCHITECTURAL DETAILS	Pasadena	91107
ARNIE'S SUPPLY SERVICES	Los Angeles	90063
CALIFORNIA WASTE SERVICES INC.	Los Angeles	90247



<b>Company</b>	<b>City</b>	<b>Zip</b>
CENTRAL CITY PALLETS, INC.	Los Angeles	90021
COMMUNITY RECYCLING & RESOURCE RECOVERY, INC.	Sun Valley	91352
DOWNTOWN DIVERSION, INC.	Los Angeles	90021
HABITAT FOR HUMANITY RESTORE	Oxnard	93036
INTERIOR REMOVAL SPECIALISTS	South Gate	90280
JUSTIS WASTE @ BFI-FALCON REFUSE CENTER	Wilmington	90744
LOONEY BINS, INC.	Sun Valley	91352
MADISON MATERIALS	Santa Ana	92701
RC PALLET INC.	Lynwood	90262
S&G PALLETS, INC.	Los Angeles	90021
SCHOLL CANYON LANDFILL-LA COUNTY SANITATION DISTRICT	Los Angeles	90041
WEST COAST PALLET, INC.	Pomona	91766
WEST COAST PALLET, INC.	Pomona	91766

10/5/2006

# Directory

---

## 25TH STREET RECYCLING

**Recycling Rate:** 100.00%

**Materials Reused or Recycled:** - Asphalt - Concrete - Rock - Gravel -

**Available Services:** - Drop off only -

**Address:** 2121 E. 25th St., Los Angeles 90058

**Phone:** 323-583-7913 **Fax:** 323-583-7997 **E-mail:** N/A

**Hours of Operation:** MON-FRI 7:00AM TO 11:00PM SAT 6:00AM TO 6:00PM

**Facility Description:** - Base Course/Road Base Manufacturer -

---

## ACTION SALES & METAL CO, INC.

**Recycling Rate:** 100.00%

**Materials Reused or Recycled:** - Metal -

**Available Services:** - Rolloff service -

**Address:** 1625 East Pacific Coast Hwy, Wilmington 90744

**Phone:** 310-549-5666 **Fax:** 310-549-5407 **E-mail:** N/A

**Hours of Operation:** MON-FRI 7:30AM TO 5:00PM SAT 7:30AM TO 3:30PM

**Facility Description:** - Scrap Metal Dealer -

---

## ALPHA RECYCLING INC.

**Recycling Rate:** 100.00%

**Materials Reused or Recycled:** - Cardboard - Scrap Paper - CRV Glass - Plastic - Aluminum Cans

**Available Services:** - Drop off -

**Address:** 13314 Saticoy St, North Hollywood 91605

**Phone:** 818-982-5800 **Fax:** 818-982-5268 **E-mail:** N/A

**Hours of Operation:** MON-FRI 7:00AM TO 5:00PM SAT 7:00AM TO 2:30PM

**Facility Description:** - Corrugated Cardboard Recycler - Recycling Center

---

**AMERICAN RECLAMATION, INC.**

**Recycling Rate:** 100.00%

**Materials Reused** - Cardboard - Metal -  
**or Recycled:**

**Available Services:** - Drop off - Regular pickup service - Rolloff service -

**Address:** 4560 Doran Street, Los Angeles 90039

**Phone:** 323-245-0125 **Fax:** 818-548-8814 **E-mail:** JOHN@SOCOASTREE.COM

**Hours of Operation:** MON-FRI 4:00AM TO 5:00PM SAT 4:00AM TO 2:00PM

**Facility Description:** - Scrap Metal Dealer - Corrugated Cardboard Recycler -

---

**AMERICAN WASTE INDUSTRIES**

**Recycling Rate:** 83.50%

**Materials Reused** - Asphalt - Brick - Cardboard - Carpet - Cinder Block - Concrete - Dirt - Drywall - Gypsum - Metal -  
**or Recycled:** Rock - Gravel - Tree Trimmings - Wood -

**Available Services:** - Drop off - Regular pickup service - Mobile On-Site Shredding.

**Address:** 11121 Pendleton Street, Sun Valley 91353

**Phone:** 818-768-1492 **Fax:** 818-768-1795 **E-mail:** HUTCH@AMERICANWASTE.COM

**Hours of Operation:** MON-FRI 7:00AM TO 6:00PM SAT 7:00AM TO 2:00PM

**Facility Description:** - Wood Waste Processor - Certified Mixed Debris Processor -

---

**AMH RECYCLING**

**Recycling Rate:** 100.00%

**Materials Reused** - Asphalt - Cinder Block - Concrete - Dirt - Rock - Gravel -  
**or Recycled:**

**Available Services:** - Drop off only -

**Address:** 11063 PENDLETON STREET, SUN VALLEY 91352

**Phone:** 818-652-4536 **Fax:** 818-252-1797 **E-mail:**

**Hours of Operation:**

**Facility Description:** - Base Course/Road Base Manufacturer -

---

**ANOTHER PALLET CO**

**Recycling Rate:** 100.00%

**Materials Reused** - Wood -  
**or Recycled:**

**Available Services:** - Drop off - Regular pickup service -

**Address:** 2110 W. Cowles Street, Long Beach 90813

**Phone:** 562-437-6106 **Fax:** 562-436-0577 **E-mail:** N/A

**Hours of Operation:** MON-FRI 7:00AM TO 4:30PM

**Facility Description:** - Reuse/Salvage Organization - Wood Pallet Recycler -

---

## ARCHITECTURAL DETAILS

**Recycling Rate:** 100.00%

**Materials Reused** - Brick - Structural Elements for Reuse - Wood - Doors - Windows - Finish Hardware - Light Fixtures -  
**or Recycled:** Roofing Tiles

**Available Services:** - Drop off only -

**Address:** 2449 White Street, Pasadena 91107

**Phone:** 626-844-6670 **Fax:** 626-844-6651 **E-mail:** N/A

**Hours of Operation:** TUE-SAT 9:00AM TO 5:00PM

**Facility Description:** - Reuse/Salvage Organization - Supplier of used materials for restoration of 1900-1960's buildings

---

## ARNIE'S SUPPLY SERVICES

**Recycling Rate:** 100.00%

**Materials Reused** - Cardboard - Wood -  
**or Recycled:**

**Available Services:** - Regular pickup service -

**Address:** 1541 N. Ditman Avenue, Los Angeles 90063

**Phone:** 323-263-1696 **Fax:** 323-263-1799 **E-mail:** ARNIES2@PACBELL.NET

**Hours of Operation:** MON-FRI 8:00AM TO 5:00PM SAT 8:00AM TO 12:00PM

**Facility Description:** - Corrugated Cardboard Recycler - Wood Pallet Recycler -

---

## ARNONE RECYCLING CENTER

**Recycling Rate:** 100.00%

**Materials Reused** - Cardboard - Metal - All Paper - CRV Containers - Metals -  
**or Recycled:**

**Available Services:** - Drop off - Regular pickup service - Rolloff service - Mobile on-site crushing -

**Address:** 5674 Cherry Ave, Long Beach 90805

**Phone:** 562-212-6400 **Fax:** 562-422-7152 **E-mail:** ARCRECYCLINGCENTER@SBCGLOBAL.NET

**Hours of Operation:** MON-FRI 7:30AM TO 4:45PM SAT 7:45AM TO 4:00PM

**Facility Description:** - Scrap Metal Dealer - Corrugated Cardboard Recycler -

---

## ASCO METALS

**Recycling Rate:** 100.00%

**Materials Reused** - Metal -  
**or Recycled:**

**Available Services:** - Rolloff service -

**Address:** 13014 Los Nietos Rd, Santa Fe Springs 90670

**Phone:** 562-944-6306 **Fax:** 562-944-6532 **E-mail:** N/A

**Hours of Operation:** MON-FRI 8:00AM TO 4:30PM

**Facility Description:** - Scrap Metal Dealer -

---

**ASSOCIATE STUDENTS INC RECYCLING CENTER  
(CSU-LONG BEACH)**

**Recycling Rate:** 100.00%

**Materials Reused** - Cardboard - Metal - Food & Beverage Glass  
**or Recycled:**

**Available Services:** - Drop off - CRV Buyback

**Address:** 1212 Bellflower Blvd, Rm. 220, Long Beach 90815

**Phone:** 562-985-5461 **Fax:** 562-985-8942 **E-mail:** RECYCLE@CSULB.EDU

**Hours of Operation:** MON, WED-FRI 7:30AM TO 5:00PM SAT-SUN 9:00AM TO 3:00PM

**Facility Description:** - Scrap Metal Dealer - Corrugated Cardboard Recycler - Recycling Center

---

**ATLAS IRON & METAL COMPANY**

**Recycling Rate:** 100.00%

**Materials Reused** - Metal - Steel - Cast Iron - Copper - Brass - Aluminum -  
**or Recycled:**

**Available Services:** - Drop off - Regular pickup service - Rolloff service -

**Address:** 10019 S. Alameda St, Los Angeles 90002

**Phone:** 323-566-5184 **Fax:** 323-566-0213 **E-mail:** GWJOSEPH@HOTMAIL.COM

**Hours of Operation:** MON-FRI 7:00AM-3:30PM SAT 7:00AM-11:30AM

**Facility Description:** - Scrap Metal Dealer -

---

**BURBANK RECYCLING CENTER**

**Recycling Rate:** 100.00%

**Materials Reused** - Cardboard - Metal - CRV Containers  
**or Recycled:**

**Available Services:** - Drop off - Regular pickup service - 6

**Address:** 500 S Flower Street, Burbank 91502

**Phone:** 818-238-3900 **Fax:** 818-238-3908 **E-mail:** KHAMPEL@CI.BURBANK.CA.US

**Hours of Operation:** MON-FRI 8:00AM TO 5:00PM SAT 8:00AM TO 4:00PM

**Facility Description:** - Scrap Metal Dealer - Corrugated Cardboard Recycler - Recycling Center

---

**CALIFORNIA METALS RECYCLING**

**Recycling Rate:** 100.00%

**Materials Reused** - Metal -  
**or Recycled:**

**Available Services:** - Drop off only -

**Address:** 9309 Rayo Ave, South Gate 90280

**Phone:** 323-567-7767 **Fax:** 323-567-5128 **E-mail:** N/A

**Hours of Operation:** MON-FRI 8:00AM TO 5:00PM SAT 8:00AM TO 3:30PM SUN 9:00AM TO 1:00PM

**Facility Description:** - Scrap Metal Dealer -

---

**CALIFORNIA WASTE SERVICES INC.**

**Recycling Rate:** 60.26%

**Materials Reused** - Asphalt - Brick - Cardboard - Cinder Block - Concrete - Dirt - Drywall - Gypsum - Glass - Metal -  
**or Recycled:** Rock - Gravel - Tree Trimmings - Wood -

**Available Services:** - Drop off - Rolloff service - call first

**Address:** 621 W. 152 Nd Street, Los Angeles 90247

**Phone:** 310-538-5998 **Fax:** 310-538-9040 **E-mail:** ERIC@CALIFORNIA WASTE SERVICES.COM

**Hours of Operation:** MON-SAT 6:00AM TO 5:00PM

**Facility Description:** - Wood Waste Processor - Certified Mixed Debris Processor -

---

**CENTRAL CITY PALLETS, INC.**

**Recycling Rate:** 100.00%

**Materials Reused** - Wood -

**or Recycled:**

**Available Services:** - Drop off - Regular pickup service -

**Address:** 2223 Enterprise Street, Los Angeles 90021

**Phone:** 213-892-0599 **Fax:** 213-892-8541 **E-mail:** N/A

**Hours of Operation:** MON-FRI 8:00AM TO 3:00PM

**Facility Description:** - Wood Pallet Recycler -

---

**CENTRAL RECLAMATION**

**Recycling Rate:** 100.00%

**Materials Reused** - Metal -

**or Recycled:**

**Available Services:** - Drop off - Rolloff service -

**Address:** 2930 E. Pico Blvd., Los Angeles 90023

**Phone:** 323-263-7400 **Fax:** 323-263-7401 **E-mail:** CENTRAL DEMO@AOL.COM

**Hours of Operation:** MON-FRI 7:00AM TO 3:30PM

**Facility Description:** - Scrap Metal Dealer -

---

**CHANDLER'S SAND & GRAVEL CO**

The Inert Fill Has A Recycling Rate of 0%

**Recycling Rate:** 100.00% for asphalt, concrete, & rock going to crusher area only.

**Materials Reused** - Asphalt - Cinder Block - Concrete - Dirt - Rock - Gravel -

**or Recycled:**

**Available Services:** - Drop off only - Crusher area for asphalt, concrete, rock, and gravel. Inert Fill for Inert Waste Material

**Address:** 26311 Palos Verdes Drive East, Rolling Hills Estate 90274

**Phone:** 310-784-2914 **Fax:** 310-326-5810 **E-mail:** GWCHANDLERS@MSN.COM

**Hours of Operation:** MON-FRI 8:00AM TO 5:00PM

**Facility Description:** - Base Course/Road Base Manufacturer - Inert Fill

---

**COMMUNITY RECYCLING & RESOURCE  
RECOVERY, INC.**

Wood and greenwaste taken to the appropriate area has a recycling rate of 100%.

**Recycling Rate:** 73.12%    **Applies to C&D recycling only.**

**Materials Reused or Recycled:** - Asphalt - Brick - Cardboard - Cinder Block - Concrete - Dirt - Drywall - Gypsum - Metal - Rock - Gravel - Tree Trimmings - Wood - Food Waste

**Available Services:** - Drop off - Regular pickup service - Rolloff service -

**Address:** 9189 Degarmo Avenue, Sun Valley 91352

**Phone:** 818-767-6000    **Fax:** 818-768-0541    **E-mail:** JRICARDSON@COMMUNITYRECYCLING.NET

**Hours of Operation:** 24 Hours/Day; 7 Days/Week

**Facility Description:** - Wood Waste Processor - Certified Mixed Debris Processor -

---

**DAN COPP CRUSHING CORPORATION**

For Information on Other Locations, Please Call

**Recycling Rate:** 100.00%

**Materials Reused or Recycled:** - Asphalt - Cinder Block - Concrete - Rock - Gravel -

**Available Services:** - Mobile on-site crushing - On-Site Screening

**Address:** 1300 N Hancock Street, Unit B., Anaheim 92807

**Phone:** 714-777-6400    **Fax:** 714-777-6410    **E-mail:** DAN@DANCOPPCRUSHING.COM

**Hours of Operation:** MON-FRI 7:00 TO 3:30PM Please Call For Info On Other Locations.

**Facility Description:** - Base Course/Road Base Manufacturer -

---

**DOWNTOWN DIVERSION, INC.**

**Recycling Rate:** 75.75%

**Materials Reused or Recycled:** - Asphalt - Brick - Cardboard - Carpet - Cinder Block - Concrete - Dirt - Drywall - Gypsum - Metal - Rock - Gravel - Structural Elements for Reuse - Tree Trimmings - Wood -

**Available Services:** - Drop off only -

**Address:** 2424 East Olympic Blvd., Los Angeles 90021

**Phone:** 213-612-5005    **Fax:** 213-612-5087    **E-mail:** MIKEHAMMER@DOWNTOWNDIVERSION.COM

**Hours of Operation:** MON-FRI 6:00AM TO 6:00PM SAT 6:00AM TO 3:00PM

**Facility Description:** - Certified Mixed Debris Processor -

---

**FREEWAY BUILDING MATERIALS**

**Recycling Rate:** 100.00%

**Materials Reused or Recycled:** - Brick - Roofing Tiles

**Available Services:** - Drop off only -

**Address:** 1124 South Boyle Avenue, Los Angeles 90023

**Phone:** 323-261-8904    **Fax:** 323-261-8904    **E-mail:** N/A

**Hours of Operation:** MON-FRI 8:00AM-5:00PM

**Facility Description:** - Reuse/Salvage Organization - Red Clay Brick Reuse Company -

---

**G HARRIS INTERNATIONAL, INC.**

**Recycling Rate: 100.00%**

**Materials Reused** - Metal -  
**or Recycled:**

**Available Services:** - Rolloff service -

**Address:** P. O. Box 1088, Wilmington 90748

**Phone:** 310-513-1424 **Fax:** 310-513-0529 **E-mail:** GMHINC@EARTHLINK.NET

**Hours of Operation:** MON-FRI 7:00AM-4:00PM

**Facility Description:** - Scrap Metal Dealer -

---

**GOOD EARTH RECYCLING CENTER**

**Recycling Rate: 100.00%**

**Materials Reused** - Cardboard - Metal - Non Ferrous only  
**or Recycled:**

**Available Services:** - Drop off -

**Address:** 2007 Bixby Road, Lakewood 90712

**Phone:** 562-490-0072 **Fax:** 562-426-0033 **E-mail:** N/A

**Hours of Operation:** MON-SAT 8:00AM TO 5:00PM

**Facility Description:** - Scrap Metal Dealer - Corrugated Cardboard Recycler - Recycling Center

---

**HABITAT FOR HUMANITY RESTORE**

Lumber, Drywall and Carpet Must Be Like New All Else Must Be Usable, No Chips.

**Recycling Rate: 100.00%**

**Materials Reused** - Brick - Carpet - Cinder Block - Drywall - Gypsum - Glass - Wood - Doors - Double Glazed Windows -  
**or Recycled:** Sinks - Toilets

**Available Services:** - Drop off - Pickup For Large Quantities Only - Non Profit Agency

**Address:** 167 Lambert Street, Oxnard 93036

**Phone:** 805-981-2268 **Fax:** 805-981-2269 **E-mail:** RESTORE@HABITATVENTURA.ORG

**Hours of Operation:** MON-TUES THURS-SAT 9:00AM TO 5:00PM WED 10:00AM TO 5:00PM

**Facility Description:** - Reuse/Salvage Organization - Building Materials Thrift Store, Resell Items To The Public.

---

**HANSON AGGREGATES**

Many locations in Southern Calif. Call for more info.

**Recycling Rate: 100.00%**

**Materials Reused** - Asphalt - Cinder Block - Concrete -  
**or Recycled:**

**Available Services:** - Drop off only - Mobile on-site crushing -

**Address:** 6956 Cherry Avenue, Long Beach 90805

**Phone:** 800-300-6120 **Fax:** 562-808-2259 **E-mail:** N/A

**Hours of Operation:** Please Call

**Facility Description:** - Base Course/Road Base Manufacturer -



---

**HARRY NADEL IRON & METAL**

**Recycling Rate:** 100.00%

**Materials Reused** - Metal -  
**or Recycled:**

**Available Services:** - Rolloff service -

**Address:** 5690 Paloma Avenue, Los Angeles 90011

**Phone:** 323-231-0138 **Fax:** 323-231-1450 **E-mail:** N/A

**Hours of Operation:** MON-FRI 6:00AM-3:30PM

**Facility Description:** - Scrap Metal Dealer -

---

**IDEAL METAL & SALVAGE CO.**

**Recycling Rate:** 100.00%

**Materials Reused** - Metal -  
**or Recycled:**

**Available Services:** - Regular pickup service -

**Address:** 18700 S. Broadway, Gardena 90248

**Phone:** 310-324-1191 **Fax:** 310-324-1999 **E-mail:** N/A

**Hours of Operation:** MON-FRI 8:00AM TO 4:00PM

**Facility Description:** - Scrap Metal Dealer -

---

**INTERIOR REMOVAL SPECIALISTS**

**Recycling Rate:** 60.50%

**Materials Reused** - Asphalt - Brick - Cardboard - Carpet - Cinder Block - Concrete - Drywall - Gypsum - Glass - Metal -  
**or Recycled:** Structural Elements for Reuse - Wood -

**Available Services:** - Rolloff service -

**Address:** 9309 Rayo Ave., South Gate 90280

**Phone:** 323-357-6900 **Fax:** N/A **E-mail:** N/A

**Hours of Operation:** MON-SAT 7:00AM TO 6:00PM

**Facility Description:** - Reuse/Salvage Organization - Certified Mixed Debris Processor - Tennant Renovation Demolition Contractor

---

**JOSEPH LEVIN & SONS**

**Recycling Rate:** 100.00%

**Materials Reused** - Metal -  
**or Recycled:**

**Available Services:** - Rolloff service -

**Address:** 2863 E. Slauson Avenue, Huntington Park 90255

**Phone:** 323-588-4207 **Fax:** 323-588-5977 **E-mail:** N/A

**Hours of Operation:** MON-FRI 7:00AM TO 3:30PM

**Facility Description:** - Scrap Metal Dealer -

---

**JUSTIS WASTE @ BFI-FALCON REFUSE CENTER**

Material must be taken to the C&D area at BFI/Justis for the recycling rate to apply.

**Recycling Rate: 84.30%**

**Materials Reused** - Asphalt - Brick - Cardboard - Cinder Block - Concrete - Dirt - Drywall - Gypsum - Metal - Rock -  
**or Recycled:** Gravel - Tree Trimmings - Wood -

**Available Services:** - Drop off only -

**Address:** 3031 East "I" Street, Wilmington 90744

**Phone:** 562-590-8531 **Fax:** 562-590-8584 **E-mail:** N/A

**Hours of Operation:** MON-FRI 6:00AM TO 4:00PM SAT 7:00AM TO 12:00PM

**Facility Description:** - Corrugated Cardboard Recycler - Wood Waste Processor - Wood Pallet Recycler - Certified Mixed Debris Processor -

---

**KRAMARS IRON & METAL, INC.**

**Recycling Rate: 100.00%**

**Materials Reused** - Metal -  
**or Recycled:**

**Available Services:** - Drop off only -

**Address:** 8821 San Fernando Rd., Sun Valley 91352

**Phone:** 818-767-4303 **Fax:** 818-767-6810 **E-mail:** KIMCO@SBCGLOBAL.NET

**Hours of Operation:** MON-FRI 8:00AM TO 4:00PM SAT 8:30AM TO 2:00PM

**Facility Description:** - Scrap Metal Dealer -

---

**KRAMER METALS, INC.**

**Recycling Rate: 100.00%**

**Materials Reused** - Cardboard - Metal -  
**or Recycled:**

**Available Services:** - Regular pickup service - Rolloff service - On-Site Scrap Processing

**Address:** 1760 E. Slauson Avenue, Los Angeles 90001

**Phone:** 323-587-2277 **Fax:** 323-588-8007 **E-mail:** KRAMERMETALS@AOL.COM

**Hours of Operation:** MON-FRI 7:00AM TO 4:30PM SAT 8:00AM TO 2:00PM

**Facility Description:** - Scrap Metal Dealer - Corrugated Cardboard Recycler -

---

**LOONEY BINS, INC.**

**Recycling Rate: 74.14%**

**Materials Reused** - Asphalt - Brick - Cardboard - Carpet - Cinder Block - Concrete - Dirt - Drywall - Gypsum - Metal -  
**or Recycled:** Rock - Gravel - Structural Elements for Reuse - Tree Trimmings - Wood - Commingled Debris

**Available Services:** - Drop off - Regular pickup service - Rolloff service -

**Address:** 11616 Sheldon Street, Sun Valley 91352

**Phone:** 818-768-7197 **Fax:** 818-768-7107 **E-mail:** MIKEHAMMER@LOONEYBINS.COM

**Hours of Operation:** MON-FRI 6:00AM TO 6:00PM

**Facility Description:** - Reuse/Salvage Organization - Certified Mixed Debris Processor -

---

**MADISON MATERIALS**

**Recycling Rate:** 53.17%

**Materials Reused** - Asphalt - Brick - Cardboard - Carpet - Cinder Block - Concrete - Dirt - Drywall - Gypsum - Glass -  
**or Recycled:** Metal - Rock - Gravel - Tree Trimmings - Wood - Tires - Electronic Waste - All Plastics

**Available Services:** - Regular pickup service - Rolloff service -

**Address:** 1035 East 4th. Street, Santa Ana 92701

**Phone:** 714-664-0159 **Fax:** 714-664-0696 **E-mail:** MADISONMATERIALS@AOL.COM

**Hours of Operation:** MON-FRI 6:00AM TO 6:00PM SAT 7:00AM TO 4:00PM

**Facility Description:** - Certified Mixed Debris Processor -

---

**NATIONAL METALS & SURPLUS**

**Recycling Rate:** 100.00%

**Materials Reused** - Metal - CRV Plastics  
**or Recycled:**

**Available Services:** - Rolloff service -

**Address:** 45255 N. Division St, Lancaster 93534

**Phone:** 661-949-2881 **Fax:** 661-949-1341 **E-mail:** NATIONALMETALS@WMCONNECT.COM

**Hours of Operation:** MON-SAT 8:00AM TO 5:00PM

**Facility Description:** - Scrap Metal Dealer -

---

**NEWMAN AND SONS, INC.**

**Recycling Rate:** 100.00%

**Materials Reused** - Asphalt - Cinder Block - Concrete - Rock - Gravel -  
**or Recycled:**

**Available Services:** - Drop off - Mobile on-site crushing -

**Address:** 9005 Bradley Avenue, Sun Valley 91352

**Phone:** 818-767-0700 **Fax:** 818-767-0224 **E-mail:** NEWMANANDSONS@AOL.COM

**Hours of Operation:** MON-FRI 6:30AM TO 5:00PM

**Facility Description:** - Base Course/Road Base Manufacturer -

---

**NUMBER 1 RECYCLING / NEW HORIZON SALVAGE**

**Recycling Rate:** 100.00%

**Materials Reused** - Metal - CRV Containers  
**or Recycled:**

**Available Services:** - Drop off only -

**Address:** 11965 Branford Street, Sun Valley 91352

**Phone:** 818-890-2267 **Fax:** 818-890-1233 **E-mail:** NUMBER1RECYCLING@MSN.COM

**Hours of Operation:** MON-FRI 7:30AM TO 4:45PM SAT 7:30AM TO 3:00PM

**Facility Description:** - Scrap Metal Dealer -

---

**OLD PASADENA VINTAGE LIGHTING**

**Recycling Rate:** 100.00%

**Materials Reused** - Old Light Fixtures - Lamps - Hardware  
**or Recycled:**

**Available Services:** - Purchase Old Light Fixtures

**Address:** 2546 E. Colorado Street, Pasadena 91107

**Phone:** 626-396-0843 **Fax:** N/A **E-mail:** OLSPASLIGHTING@HOTMAIL.COM

**Hours of Operation:** WED-SUN 10:00AM TO 6:00PM

**Facility Description:** - Reuse/Salvage Organization -

---

**P&T METALS, INC.**

**Recycling Rate:** 100.00%

**Materials Reused** - Metal -  
**or Recycled:**

**Available Services:** - Drop off - Regular pickup service - Rolloff service -

**Address:** 2213 N. Tyler Ave, South El Monte 91733

**Phone:** 626-443-8921 **Fax:** 626-443-8959 **E-mail:** TED@PTMETALS.COM

**Hours of Operation:** MON-FRI 8:00AM-4:45PM SAT 7:00AM-1:00PM

**Facility Description:** - Scrap Metal Dealer -

---

**PALMDALE RECYCLING, INC.**

**Recycling Rate:** 100.00%

**Materials Reused** - Cardboard - Metal - Non Ferrous Metals - Paper - CRV Containers  
**or Recycled:**

**Available Services:** - Drop off only -

**Address:** 38022 Sierra Hwy, Palmdale 93550

**Phone:** 661-273-4825 **Fax:** N/A **E-mail:** N/A

**Hours of Operation:** TUE-FRI 8:00AM TO 4:30PM SAT 8:00AM TO 2:00PM

**Facility Description:** - Scrap Metal Dealer - Corrugated Cardboard Recycler - Recycling Center

---

**POMONA SCRAP METAL**

**Recycling Rate:** 100.00%

**Materials Reused** - Metal -  
**or Recycled:**

**Available Services:** - Rolloff service -

**Address:** 1432 E. 1st Street, Pomona 91766

**Phone:** 909-623-1373 **Fax:** N/A **E-mail:** N/A

**Hours of Operation:** MON-FRI 7:00AM TO 4:30PM

**Facility Description:** - Scrap Metal Dealer -

---

**POMONA VALLEY RECYCLING CENTER**

**Recycling Rate: 100.00%**

**Materials Reused** - Cardboard - Metal - Plastic - Paper  
**or Recycled:**

**Available Services:** - Regular pickup service - Rolloff service -

**Address:** 1326 E. Ninth St, Pomona 91766

**Phone:** 909-629-5265 **Fax:** 909-623-0141 **E-mail:** INFO@KOPLY.COM

**Hours of Operation:** MON-FRI 8:00AM TO 4:30PM SAT 8:00AM TO 2:00PM

**Facility Description:** - Scrap Metal Dealer - Corrugated Cardboard Recycler - Recycling Center

---

**RC PALLET INC.**

**Recycling Rate: 100.00%**

**Materials Reused** - Wood - Pallets - Used Lumber  
**or Recycled:**

**Available Services:** - Drop off - Regular pickup service - Service Charge May Apply

**Address:** 11500 Wright Road, Lynwood 90262

**Phone:** 310-608-3330 **Fax:** 310-609-0393 **E-mail:** MCORTES@RCPALLET.COM

**Hours of Operation:** MON-FRI 7:00AM-6:00PM SAT 7:00AM-2:00PM

**Facility Description:** - Reuse/Salvage Organization - Wood Pallet Recycler -

---

**S&G PALLETS, INC.**

**Recycling Rate: 100.00%**

**Materials Reused** - Wood - Pallets  
**or Recycled:**

**Available Services:** - Regular pickup service -

**Address:** P.O. Box 21451, Los Angeles 90021

**Phone:** 323-238-0470 **Fax:** 323-846-8575 **E-mail:** N/A

**Hours of Operation:** MON-FRI 7:00AM TO 5:00PM SAT 8:00AM TO 12:00PM

**Facility Description:** - Reuse/Salvage Organization - Wood Pallet Recycler -

---

**SCHOLL CANYON LANDFILL-LA COUNTY  
SANITATION DISTRICT**

Dirt taken here does not count as recycling

**Recycling Rate: 100.00%**

**Materials Reused** - Dirt - Tree Trimmings -  
**or Recycled:**

**Available Services:** - Drop off only -

**Address:** 7721 N. Figueroa Avenue, Los Angeles 90041

**Phone:** 818-247-0735 **Fax:** 818-507-5983 **E-mail:** MREVILLA@LACSD.ORG

**Hours of Operation:** MON-SAT 8:00AM TO 5:00PM

**Facility Description:** - Landfill (recycling rate is for tree trimmings not for dirt)

---

**SIMI VALLEY BASE, INC.**

**Recycling Rate: 100.00%**

**Materials Reused** - Asphalt - Brick - Cinder Block - Concrete - Rock - Gravel -  
**or Recycled:**

**Available Services:** - Drop off only - Rolloff service -

**Address:** 240 W. Los Angeles Ave., Simi Valley 93065

**Phone:** 805-520-3595 **Fax:** 805-520-4794 **E-mail:** NMITRUCK@AOL.COM

**Hours of Operation:** MON-FRI 7:00AM TO 4:00PM

**Facility Description:** - Base Course/Road Base Manufacturer -

---

**SLSN, INC.**

**Recycling Rate: 100.00%**

**Materials Reused** - Asphalt - Brick - Cinder Block - Concrete - Dirt - Rock - Gravel -  
**or Recycled:**

**Available Services:** - Drop off - Mobile on-site crushing -

**Address:** P.O.Box 1286, Monrovia 91017

**Phone:** 626-574-1855 **Fax:** 626-574-7053 **E-mail:** N/A

**Hours of Operation:** MON-FRI 7:00AM TO 6:00PM

**Facility Description:** - Base Course/Road Base Manufacturer -

---

**STANDARD METALS RECYCLING**

**Recycling Rate: 100.00%**

**Materials Reused** - Metal -  
**or Recycled:**

**Available Services:** - Drop off - Regular pickup service -

**Address:** 2032 East 220th Street, Long Beach 90503

**Phone:** 310-212-6265 **Fax:** 310-835-9297 **E-mail:** LLEWINSONTST-INC.COM

**Hours of Operation:** MON-FRI 7:00AM TO 3:00PM

**Facility Description:** - Scrap Metal Dealer -

---

**TAPO ROCK AND SAND, INC.**

**Recycling Rate: 100.00%**

**Materials Reused** - Asphalt - Concrete - Dirt - Rock - Gravel -  
**or Recycled:**

**Available Services:** - Drop off only -

**Address:** 5320 Tapo Canyon Road, Simi Valley 93065

**Phone:** 805-526-2899 **Fax:** 805-527-7434 **E-mail:** N/A

**Hours of Operation:** MON-FRI 6:30AM TO 4:30PM

**Facility Description:** - Base Course/Road Base Manufacturer -

---

**VALLEY BASE MATERIALS, INC**

**Recycling Rate:** 100.00%

**Materials Reused** - Asphalt - Concrete - Rock - Gravel -  
**or Recycled:**

**Available Services:** - Drop off only - Mobile on-site crushing -

**Address:** 9050 Norris Avenue, Sun Valley 91352

**Phone:** 818-767-3088 **Fax:** 818-767-3169 **E-mail:** N/A

**Hours of Operation:** 24 HOURS - 7 DAYS A WEEK.

**Facility Description:** - Base Course/Road Base Manufacturer -

---

**VALLEY RECYCLING CENTER**

**Recycling Rate:** 100.00%

**Materials Reused** - Cardboard - Metal - CRV Glass - #1,#2 Plastics - Paper  
**or Recycled:**

**Available Services:** - Drop off - Regular pickup service - Rolloff service -

**Address:** 20220 Plummer Street, Chatsworth 91311

**Phone:** 818-885-7318 **Fax:** N/A **E-mail:** VALLEYRECYCLE@EARTHLINK.NET

**Hours of Operation:** MON-FRI 7:00AM TO 5:00PM SAT 8:00AM TO 4:00PM

**Facility Description:** - Scrap Metal Dealer - Corrugated Cardboard Recycler - Recycling Center

---

**WEST COAST PALLET, INC.**

**Recycling Rate:** 100.00%

**Materials Reused** - Cardboard - Dirt - Drywall - Gypsum - Metal - Tree Trimmings - Wood -  
**or Recycled:**

**Available Services:** - Drop off - Regular pickup service - Rolloff service -

**Address:** 1455 East 3rd. Street, Pomona 91766

**Phone:** 909-622-1784 **Fax:** 909-622-5626 **E-mail:** N/A

**Hours of Operation:** MON-FRI 6:30AM-3:30PM, SAT 7:00AM-2:00PM

**Facility Description:** - Reuse/Salvage Organization - Wood Pallet Recycler -

---

**WEST COAST PALLET, INC.**

**Recycling Rate:** 100.00%

**Materials Reused** - Wood - Pallets  
**or Recycled:**

**Available Services:** - Regular pickup service -

**Address:** 1455 E. 3rd Street, Pomona 91766

**Phone:** 909-622-1784 **Fax:** 909-622-5626 **E-mail:** N/A

**Hours of Operation:** MON-FRI 6:30AM TO 3:30PM

**Facility Description:** - Wood Pallet Recycler -

## **APPENDIX D**

### **Inert Disposal Facilities and Diversion Designations**



## Inert Disposal Facilities and Diversion Designations

FACILITY NAME	CIWMB PERMIT NUMBER	FACILITY TYPE	DIVERSION DESIGNATION OF MATERIAL TAKEN TO FACILITY	LOCATION	
3 Mile Pit Inert Debris Type A Operation	37-AA-0954	Inert Waste Disposal Site	Disposal	1/8 M. north of Baseline Road	Camp Pendleton (Mil Res), CA 90254
Agua Mansa Landfill	36-AA-0019	Inert Debris Eng Fill Operation	Neutral	588 East Agua Mansa Road	Rialto, Ca 92376
Ameron Landfill	19-AA-0007	Inert Waste Disposal Site	Disposal	Gray Rd. & Garfield Ave On Edison Right	South Gate, Ca 90280
Arcadia City Dump	19-AA-1548	Solid Waste Disposal Site	Disposal	670 & Live Oak Ave	Arcadia Ca 91066
Arcadia Reclamation Project	19-AA-0868	Inert Debris Eng Fill Operation	Neutral	12321 Lower Azusa Road	Arcadia, Ca 91732
Azusa Land Reclamation Co. Landfill	19-AA-0013	Inert Waste Disposal Site	Disposal	1211 West Gladstone Street	Azusa, Ca 91720
Brand Park Landfill	19-AA-0006	Inert Waste Disposal Site	Disposal	1601 West Mountain Street	Glendale, Ca 91207
Chandler	19-AE-0004	Inert Debris Eng Fill Operation And CMB Mfg	Neutral Unless The Weigh Ticket Shows Material Destined For Crushed Base Pile Then	26311 Palos Verde Drive East	Rolling Hills Estates, Ca 90274

## Inert Disposal Facilities and Diversion Designations

FACILITY NAME	CIWMB PERMIT NUMBER	FACILITY TYPE	DIVERSION DESIGNATION OF MATERIAL TAKEN TO FACILITY	LOCATION	
			It Counts As Recycling		
City Of San Gabriel Disposal Site	19-AA-0004	Inert Waste Disposal Site	Disposal	927 East Grand Avenue	San Gabriel, Ca 91770
County Parks And Rec Dept.	19-AA-5149	Inert Waste Disposal Site	Disposal	5361 W. Slauson Ave	Los Angeles (County), Ca 90001
Del Rio IDEFO	30-AB-0393	Inert Debris Eng Fill Operation	Neutral	15505 East Lincoln Avenue	Orange, Ca 92865
Frank R. Bowerman Sanitary LF	30-AB-0360	Solid Waste Landfill	Disposal	11002 Bee Canyon Access Road	Irvine, CA 92618
Hanson Aggregates West, Inc.	19-AA-0044	Inert Debris Eng Fill Operation	Neutral	13550 Live Oak Av, E Hwy 605 W San Gab R	Irwindale, Ca 917071318
Hetzler Landfill	19-AA-5099	Inert Waste Disposal Site	Disposal	Jefferson And Duquesne	Culver City, Ca
Holliday Inert Waste Site	36-AA-0064	Inert Debris Eng Fill Operation	Neutral	249 East Santa Ana Avenue	Rialto, Ca 92316

## Inert Disposal Facilities and Diversion Designations

<b>FACILITY NAME</b>	<b>CIWMB PERMIT NUMBER</b>	<b>FACILITY TYPE</b>	<b>DIVERSION DESIGNATION OF MATERIAL TAKEN TO FACILITY</b>	<b>LOCATION</b>	
Irwindale Rock Plant D.S.	19-AA-0046	Inert Waste Disposal Site	Disposal	1245 E. Arrow Hwy.	Irwindale, Ca 91010
Lower Azusa Reclamation Project	19-AA-0868	Inert Waste Disposal Site	Disposal	12321 Lower Azusa Road	Arcadia, Ca 91732
Montebello Land & Water Co.	19-AA-0019	Inert Waste Disposal Site	Disposal	283 East Maiden Lane	Montebello, Ca 90640
Nu-way Live Oak Reclamation	19-AA-0849	Inert Debris Eng Fill Operation	Neutral	13620 Live Oak Lane	Irwindale, Ca 91706
Nu-Way Industries, Inc	19-AA-0043	Inert Waste Disposal Site	Disposal	400 East Live Oak Avenue	Irwindale, Ca 91706
Olinda Alpha	30-AB-0035	Solid Waste Landfill	Disposal	1942 N. Valencia Avenue	Brea, Ca 92823
Peck Road Gravel Pit	19-AA-0838	Inert Waste Disposal Site	Disposal	128 E. Live Oak Avenue	Monrovia, Ca 91016
Pennsylvania Street Inert Landfill	36-AA-0313	Inert Debris Eng Fill Operation	Neutral	1955 West 9th Street	San Bernardino, Ca 92411
Prima Deshecha Sanitary Landfill	30-AB-0019	Solid Waste Landfill	Disposal	32250 La Pata Ave	San Juan Capistrano 92675
R. J. Noble Company	30-AB-0392	Inert Debris Eng Fill Operation	Neutral	15505 East Lincoln Avenue	Orange, Ca 92865

## Inert Disposal Facilities and Diversion Designations

<b>FACILITY NAME</b>	<b>CIWMB PERMIT NUMBER</b>	<b>FACILITY TYPE</b>	<b>DIVERSION DESIGNATION OF MATERIAL TAKEN TO FACILITY</b>	<b>LOCATION</b>	
Reliance Pit #2	19-AA-0854	Inert Debris Eng Fill Operation	Neutral	15990 Foothill Blvd	Irwindale, Ca 91706
Ramona Land Reclamation Area	19-AA-0584	Inert Waste Disposal Site	Disposal	3600 Ramona Blvd	Monterey Park, Ca 91754
Sam Jones Landfill	33-AA-0256	Inert Debris Eng Fill Operation	Neutral	27-925 Rio Del Sol Rd	Thousand Palms, Ca 92276
Security Company	19-AA-5210	Inert Waste Disposal Site	Disposal	350 S Atlantic Blvd.	Monterey Park, Ca 91754
South Gate Solid Fill	19-AA-0042	Inert Waste Disposal Site	Disposal	10200 Miller's Way	South Gate, Ca 90280
Strathern Sanitary Landfill	19-AR-1016	Inert Waste Disposal Site	Disposal	11201 Strathern Street	Sun Valley, Ca 91352
United Rock Pit # 3	19-AA-0020	Inert Debris Type A Proc. Operation	Disposal	1137 Meridian Hwy.	Irwindale, Ca 91706
Vulcan Concrete And Asphalt Recycling Plant	NOW CLOSED	Closed Base Plant	-----	8960 Bradley Ave	Sun Valley
Vulcan Hot Mix Plant	TAKES VERY CLEAN ASPHALT ONLY	Asphalt Hot Mix Plant	Diversion	11447 Tuxford	Sun Valley

## Inert Disposal Facilities and Diversion Designations

FACILITY NAME	CIWMB PERMIT NUMBER	FACILITY TYPE	DIVERSION DESIGNATION OF MATERIAL TAKEN TO FACILITY	LOCATION	
Vulcan Materials	NOT A LANDFILL OR RECYCLING FACILITY	Office Facility And Address On Weigh Tickets For The Inert Fill (Site 84 Or 506 On The Weigh Ticket)	-----	3200 San Fernando Road	Los Angeles Ca 90065
Vulcan Materials Company Carrol Cyn.	37-AB-0013	Inert Debris Eng Fill Operation	Neutral	10051 Black Mountain Road	San Diego, Ca 92126
Vulcan/Calmat Disposal Site	19-AR-1160	Inert Debris Eng Fill Operation	Neutral	9436 Glenoaks Blvd And 11520 Sheldon St	Los Angeles (City), CA 91352
Walnut Avenue & Arrow Hwy	19-AA-5243	Inert Waste Disposal Site (Closed)	Disposal	105-195 E. Arrow Highway	San Dimas, Ca 9177
Nu-Way Arrow Reclamation	19-AA-1074	Inert Debris Eng Fill Operation	Neutral	1270 Arrow Highway	Irwindale, CA 91706

## **APPENDIX E**

### **California Commercial Offsite Hazardous Waste Facilities**

## **CALIFORNIA COMMERCIAL OFFSITE HAZARDOUS WASTE FACILITIES**

This listing includes all commercial hazardous waste permitted Recycling, Treatment, Transfer, Storage and Disposal Facilities (TSDF) that accept offsite waste for a fee and perform treatment and/or disposal at the facility. This listing will be periodically updated as additional information is obtained.

### **DISCLAIMER**

Inclusion of facilities in this document is for information only and constitutes neither an endorsement of these facilities by DTSC nor a certification by DTSC that they are operated in compliance with all applicable laws and regulations. The information in this listing includes names, addresses and telephone numbers of hazardous waste facilities that may accept hazardous wastes from generators in California. Although an attempt has been made to provide the most accurate information available, the state assumes no obligation for reliance upon this listing should there be any omission or error in any listing or description contained herein. Facility eligibility is subject to change without notice resulting from a variety of factors, including enforcement actions. Postings or enforcement documents are available at: <http://www.dtsc.ca.gov/EnforcementOrders.cfm>. If you have additional questions or any suggestions, comments, or corrections, please call, e-mail or write:

DEPARTMENT OF TOXIC SUBSTANCES CONTROL  
HAZARDOUS WASTE MANAGEMENT PROGRAM  
1001 I STREET, 11th FLOOR  
P.O. BOX 806  
SACRAMENTO, CA 95812-0806

ATTN: DAVID WRIGHT  
Voice: 916-322-0584  
Fax: 916-322-1005  
E-Mail: [dwright1@dtsc.ca.gov](mailto:dwright1@dtsc.ca.gov)

# CALIFORNIA COMMERCIAL OFF-SITE HAZARDOUS WASTE FACILITIES LIST

Attachment 23.1-3

FACILITY NAME/ID #	FACILITY ADDRESS	FACILITY INFO	FACILITY WEBSITE/ EMAIL ADDRESS
<b>BATTERY RECYCLERS</b>			
EXIDE INC CAD097854541	2700 S. Indiana Street Los Angeles, CA 90058	323.262.1101	<a href="http://www.exide.com">www.exide.com</a>
KINSBURSKY BROS SUPPLY INC CAD088504881	1314 N. Anaheim Anaheim, CA 92801	714.738.8516	<a href="http://www.kinsbursky.com">www.kinsbursky.com</a>
QUEMETCO INC CAD066233966	720 S. Seventh Ave. City of Industry, CA 91746	626.330.2294	
<b>FLUORESCENT LIGHTING</b>			
LIGHTING RESOURCES, INC CAR000156125	805 East Francis Street Ontario, CA 91761	909.923.7252	<a href="http://www.lightingresourcesinc.com">www.lightingresourcesinc.com</a>
VEOLIAES (ONYX) ENVIRONMENTAL SERVICES, LLC CAT080014079	1125 Hensley Street Richmond, CA 94801	510.233.8001	<a href="http://www.veoliaes.com">www.veoliaes.com</a>
<b>LANDFILLS</b>			
CHEMICAL WASTE MGT, KETTLEMAN CAT000646117	35251 Old Skyline Road KETTLEMAN CITY, CA 93210	559.386.9711	<a href="http://www.wm.com/Templates/FAC4330/index.asp">www.wm.com/Templates/FAC4330/index.asp</a>
CLEAN HARBORS, BUTTONWILLOW, LLC CAD980675276	2500 W. Lokern Road Buttonwillow, CA 93206	661.762.6200	<a href="http://www.cleanharbors.com">www.cleanharbors.com</a>
CLEAN HARBORS, WESTMORLAND, LLC CAD000633164	P.O. Box 158 Westmorland, CA 92281	760.344.9400	<a href="http://www.cleanharbors.com">www.cleanharbors.com</a>



# CALIFORNIA COMMERCIAL OFF-SITE HAZARDOUS WASTE FACILITIES LIST

Attachment 23.1-3

<b>EW/PC/PLASTICS</b>			
KINSBURSKY BROS SUPPLY INC	1314 N. Anaheim	714.738.8516	<a href="http://www.kinsbursky.com">www.kinsbursky.com</a>
CAD088504881	Anaheim, CA 92801		
KW PLASTICS OF CALIFORNIA	1861 Sunnyside Ct.	805.392.0500	<a href="http://www.kwplastics.com">www.kwplastics.com</a>
CAD982435026	Bakersfield, CA 93308		
NORANDA RECYCLING, INC	1695 Monterey Hwy	408.998.4930	<a href="http://www.norandarecycling.com">www.norandarecycling.com</a>
CAD069124717	San Jose, CA 95112-6113		
PHIBRO TECH INC	8851 Dice Road	562.698.8036	<a href="http://www.phibro-tech.com">www.phibro-tech.com</a>
CAD008488025	Santa Fe Springs, CA 90670		
<b>PRECIOUS METAL/ METAL</b>			
DAVID H. FELL COMPANY, Inc.	6009 Bandini Blvd.	323.722.9992	<a href="http://www.dhfco.com">www.dhfco.com</a>
CAL000110141	Commerce, CA 90040		
ECS REFINING	705 Reed Street	408.988.4386	<a href="http://www.ecsrefining.com/">http://www.ecsrefining.com/</a>
CAD003963592	Santa Clara, CA 95050		
HERAEUS METAL PROCESSING, INC	13429 Alondra Blvd.	562.483.1841	<a href="http://www.heraeuspm.com/home.htm">www.heraeuspm.com/home.htm</a>
CAD060398229	Santa Fe Springs, CA 90670		
J&B ENTERPRISES/KEN EPSMAN	1650 Russel Ave.	408.988.7900	<a href="http://www.jandb.com">www.jandb.com</a>
CAD982052797	Santa Clara, CA 95054		
KINSBURSKY BROS SUPPLY INC	1314 N. Anaheim	714.738.8516	<a href="http://www.kinsbursky.com">www.kinsbursky.com</a>
CAD088504881	Anaheim, CA 92801		
METECH INTERNATIONAL	6200 Engle Way	408.848.3050	<a href="http://www.metechgroup.com">www.metechgroup.com</a>
CAD077182293	Gilroy, CA 95020		

# CALIFORNIA COMMERCIAL OFF-SITE HAZARDOUS WASTE FACILITIES LIST

Attachment 23.1-3

NORANDA RECYCLING, INC	1695 Monterey Hwy	408.998.4930	<a href="http://www.norandarecycling.com">www.norandarecycling.com</a>
CAD069124717	San Jose, CA 95112-6113		
P.KAY METAL, INC	2448 East 25th Street	213.585.5058	<a href="http://www.pkmetal.com">www.pkmetal.com</a>
CAL00002411	Los Angeles, CA 90058		
SAFETY KLEEN CORP, REEDLEY R C	1000 S. I Street	(800) 669-5740	<a href="http://www.safety-kleen.com">www.safety-kleen.com</a>
CAD093459485	Reedley, CA 93654		
WIT REFINING	538 Phelan Ave.	408.295.6414	<a href="http://www.witrefining.com">www.witrefining.com</a>
CAD980888598	San Jose, CA 95112		
<b>SOLVENT RECOVERY</b>			
CLEAN HARBORS, SAN JOSE, LLC	1021 Berryessa Road	408.451.5114	<a href="http://www.cleanharbors.com">www.cleanharbors.com</a>
CAD059494310	San Jose, CA 95133		
PACIFIC RESOURCE RECOVERY SERVICE	3150 E. Pico Blvd.	800.499.7145	<a href="http://www.pacificresourcerecovery.com">www.pacificresourcerecovery.com</a>
CAD008252405	Los Angeles, CA 90023		
RHO CHEM CORP	425 Isis Ave.	323.776.6233	<a href="http://www.pscnow.com">www.pscnow.com</a>
CAD008364432	Inglewood, CA 90301		
ROMIC ENVIRONMENTAL	2081 Bay Road	650-324-1638	<a href="http://www.romic.com">www.romic.com</a>
TECHNOLOGIES CORP - CAD009452657	East Palo Alto, CA 94303	1.800.766.4248	
SAFETY KLEEN CORP	1000 S. I Street	559.638.3010	<a href="http://www.safety-kleen.com">www.safety-kleen.com</a>
CAD093459485	Reedley, CA 93654		
VEOLIAES (ONYX) ENVIRONMENTAL SERVICES, LLC	1704 W. 1st Street	626.334.5117	<a href="http://www.veoliaes.com">www.veoliaes.com</a>
CAD008302903	AZUSA, CA 91702		

# CALIFORNIA COMMERCIAL OFF-SITE HAZARDOUS WASTE FACILITIES LIST

Attachment 23.1-3

TRANSFER STATIONS			
CLEAN HARBORS, Lenfest Rail CAL000191813	660 Lenfest Road San Jose, CA 95133	800.645.8264	<a href="http://www.cleanharbors.com">www.cleanharbors.com</a>
CLEAN HARBORS, Los Angeles, LLC CAD050806850	5756 Alba Street Los Angeles, CA 90058	323.277.2500	<a href="http://www.cleanharbors.com">www.cleanharbors.com</a>
CLEAN HARBORS, SAN JOSE, LLC CAD059494310	1021 Berryessa Road San Jose, CA 95133	408.451.5114	<a href="http://www.cleanharbors.com">www.cleanharbors.com</a>
DEMENNO KERDOON CAT080013352	2000 N. Alameda Street Compton, CA 90222	310.537.7100	<a href="http://www.demennokerdoon.com">www.demennokerdoon.com</a>
DEMENNO KERDOON CAT080033681	3650 E. 26th Street Vernon, CA 90023	323.268.3387	<a href="http://www.demennokerdoon.com">www.demennokerdoon.com</a>
DEMENNO KERDOON CAT080012602	7300 Chevron Way Dixon, CA 95620	707.693.6008	<a href="http://www.demennokerdoon.com">www.demennokerdoon.com</a>
ECOLOGY CONTROL INDUSTRIES CAD009466392	255 Parr Blvd. Richmond, CA 94801	510.235.1393	<a href="http://www.ecologycontrol.com">www.ecologycontrol.com</a>
GENERAL ENVIRONMENTAL MANAGEMENT DBA GEM of Rancho Cordova, LLC - CAD980884183	11855 White Rock Road Rancho Cordova, CA 95742-6699	916.351.0980	<a href="http://www.go-gem.com">www.go-gem.com</a>
PACIFIC RESOURCE RECOVERY SERVICE CAD008252405	3150 E. Pico Blvd. Los Angeles, CA 90023	800.499.7145	<a href="http://www.pacificresourcerecovery.com">www.pacificresourcerecovery.com</a>
RHO CHEM CORP CAD008364432	425 Isis Ave. Inglewood, CA 90301	323.776.6233	<a href="http://www.pscnow.com">www.pscnow.com</a>
SAFETY KLEEN SYSTEMS, INC. CAT000613893	10625 Hickson Street, Suite A El Monte, CA 91731	(800) 669-5740	<a href="http://www.safety-kleen.com">www.safety-kleen.com</a>
SAFETY KLEEN SYSTEMS, INC. CAD066113465	3561 S. Maple Street Fresno, CA 93725	(800) 669-5740	<a href="http://www.safety-kleen.com">www.safety-kleen.com</a>

# CALIFORNIA COMMERCIAL OFF-SITE HAZARDOUS WASTE FACILITIES LIST

Attachment 23.1-3

SAFETY KLEEN SYSTEMS, INC.	7979 Palm Ave., Suite E	(800) 669-5740	<a href="http://www.safety-kleen.com">www.safety-kleen.com</a>
CAT000613927	Highland, CA 92346		
SAFETY KLEEN SYSTEMS, INC.	2918 Worthen Ave	(800) 669-5740	<a href="http://www.safety-kleen.com">www.safety-kleen.com</a>
CAT000613935	Los Angeles, CA 90039		
SAFETY KLEEN SYSTEMS, INC.	6000 88th Street	(800) 669-5740	<a href="http://www.safety-kleen.com">www.safety-kleen.com</a>
CA0000084517	Sacramento, CA 95828		
VEOLIAES (ONYX) ENVIRONMENTAL SERVICES, LLC	1704 W. 1st Street	626.334.5117	<a href="http://www.veoliaes.com">www.veoliaes.com</a>
CAD008302903	AZUSA, CA 91702		
VEOLIAES (ONYX) ENVIRONMENTAL SERVICES, LLC	1125 Hensley Street	510.233.8001	<a href="http://www.veoliaes.com">www.veoliaes.com</a>
CAT080014079	Richmond, CA 94801		
<b>TREATMENT FACILITIES</b>			
CHEMICAL WASTE MGT, KETTLEMAN	KETTLEMAN CITY, CA 93210	559.386.9711	<a href="http://www.wm.com/Templates/FAC4330/index.asp">www.wm.com/Templates/FAC4330/index.asp</a>
CAT000646117			
CLEAN HARBORS, SAN JOSE, LLC	1021 Berryessa Road	408.451.5114	<a href="http://www.cleanharbors.com">www.cleanharbors.com</a>
CAD059494310	San Jose, CA 95133		
CLEAN HARBORS, Buttonwillow, LLC	2500 W. Lokern Road	661.762.6200	<a href="http://www.cleanharbors.com">www.cleanharbors.com</a>
CAD980675276	Buttonwillow, CA 93206		
CLEAN HARBORS, Los Angeles, LLC	5756 Alba Street	323.277.2500	<a href="http://www.cleanharbors.com">www.cleanharbors.com</a>
CAD050806850	Los Angeles, CA 90058		
CLEAN HARBORS, WESTMORLAND, LLC	P.O. Box 158	760.344.9400	<a href="http://www.cleanharbors.com">www.cleanharbors.com</a>
CAD000633164	Westmorland, CA 92281		

# CALIFORNIA COMMERCIAL OFF-SITE HAZARDOUS WASTE FACILITIES LIST

Attachment 23.1-3

CLEAN HARBORS, WILMINGTON	1737 Denni Street	310.835.9998	<a href="http://www.cleanharbors.com">www.cleanharbors.com</a>
CAD044429835	Wilmington, CA 90744		
CROSBY and OVERTON - Plant #1	1630 W. 17th	562.432.5445	<a href="http://www.crosbyoverton.com">www.crosbyoverton.com</a>
CAD028409019	Long Beach, CA 90813		
FILTER RECYCLING SERVICES, INC	180 W. Monte Ave. Unit A	909.424.1630	<a href="http://www.filterrecycling.com">www.filterrecycling.com</a>
CAD982444481	Rialto, CA 92316		
GENERAL ENVIRONMENTAL MANAGEMENT	11855 White Rock Road	916.351.0980	<a href="http://www.go-gem.com">www.go-gem.com</a>
DBA GEM OF RANCHO CORDOVA, LLC -	Rancho Cordova, CA 95742-6699		
CAD980884183			
IONIZATION RESEARCH COMPANY, dba Eco solution	1823 Houret Court	510 562-1871	
CAL000 175030	Milpitas, CA 95035		
PACIFIC RESOURCE RECOVERY SERVICE	3150 E. Pico Blvd.	800.499.7145	<a href="http://www.pacificresourcerecovery.com">www.pacificresourcerecovery.com</a>
CAD008252405	Los Angeles, CA 90023		
RHO CHEM CORP	425 Isis Ave.	323.776.6233	<a href="http://www.pscnow.com">www.pscnow.com</a>
CAD008364432	Inglewood, CA 90301		
ROMIC ENVIRONMENTAL	2081 Bay Road	656.462.2380	<a href="http://www.romic.com">www.romic.com</a>
TECHNOLOGIES CORP - CAD009452657	East Palo Alto, CA 94303		
SAFETY KLEEN SYSTEMS, INC.	1000 S. I Street	(800) 669-5740	<a href="http://www.safety-kleen.com">www.safety-kleen.com</a>
CAD093459485	Reedley, CA 93654		
U S FILTER RECOVERY SERVICES	5375 S. Boyle Ave.	323.277.1518	<a href="http://www.usfilter.com">www.usfilter.com</a>
CAD097030993	Vernon, CA 90058-4400		

# CALIFORNIA COMMERCIAL OFF-SITE HAZARDOUS WASTE FACILITIES LIST

Attachment 23.1-3

USED OIL/ANTIFREEZE			
ADVANCED ENVIRONMENTAL INC	13579 Whittram	909.356.4521	<a href="http://www.aercycling.com">www.aercycling.com</a>
CAT080025711	Fontana, CA 92335		<a href="http://www.romic.com">www.romic.com</a>
ASBURY ENVIRONMENTAL SERVICES	2549 Scott Ave	800.974.4495	<a href="http://www.asburyenv.com">www.asburyenv.com</a>
CAL000827844	Chico, CA 95927		
AUTOMOTIVE ENVIRONMENTAL SERVICES	16117 Montoya Street	626.334.1835	<a href="http://www.romic.com">www.romic.com</a>
CAL000113451	Irwindale, CA 91702	800.909.8777	
BAYSIDE OIL/HEDRICK DISTRIBUTORS, INC	210 Encinal Street	626.334.1835	
CAD088838222	Santa Cruz, CA 95060		
BUTLER MANAGEMENT INC	3301 E. Avenue 1	661.946.2420	
CAD981426539	Lancaster, CA 93535	661.946.1124	
CHICO DRAIN OIL SERVICE, LLC	1618 W. 5th Street	530.345.9043	
CAD980694103	Chico, CA 95926		
CHICO DRAIN OIL SERVICE, LLC	200 Dinsmore Drive	530.345.9043	
CAL930256136	Fortuna, CA 95540		
CLEAN HARBORS, SAN JOSE, LLC	1021 Berryessa Road	408.451.5114	<a href="http://www.cleanharbors.com">www.cleanharbors.com</a>
CAD059494310	San Jose, CA 95133		
CLEAN HARBORS, Los Angeles, LLC	5756 Alba Street	323.277.2500	<a href="http://www.cleanharbors.com">www.cleanharbors.com</a>
CAD050806850	Los Angeles, CA 90058		
CLEAN HARBORS, WILMINGTON	1737 Denni Street	310.835.9998	<a href="http://www.cleanharbors.com">www.cleanharbors.com</a>
CAD044429835	Wilmington, CA 90744		
CLEARWATER ENV MGT DBA ALVISO	5002 Archer Street	510.476.1740	<a href="http://www.clearwateremi.com">www.clearwateremi.com</a>
INDEPENDENT OIL - CAL000102751	Alviso, CA 95002		
CRANES WASTE OIL, INC	16095 HWY 178	760.378.3010	<a href="http://www.craneswasteoil.com">www.craneswasteoil.com</a>
CAD980813950	Weldon, CA 93283		
CROSBY and OVERTON - Plant #1	1630 W. 17th	562.432.5445	<a href="http://www.crosbyoverton.com">www.crosbyoverton.com</a>
CAD028409019	Long Beach, CA 90813		

# CALIFORNIA COMMERCIAL OFF-SITE HAZARDOUS WASTE FACILITIES LIST

Attachment 23.1-3

DEMENNO KERDOON	2000 N. Alameda Street	310.537.7100	<a href="http://www.demennokerdoon.com">www.demennokerdoon.com</a>
CAT080013352	Compton, CA 90222		
DEMENNO KERDOON	3650 E. 26th Street	323.268.3387	<a href="http://www.demennokerdoon.com">www.demennokerdoon.com</a>
CAT080033681	Vernon, CA 90023		
DEMENNO KERDOON	7300 Chevron Way	707.693.6008	<a href="http://www.demennokerdoon.com">www.demennokerdoon.com</a>
CAT080012602	Dixon, CA 95620		
EVERGREEN ENVIRONMENTAL SERVICES	16604 S. San Pedro Street	510.795.4400	<a href="http://www.evergreenoil.com">www.evergreenoil.com</a>
CAD981696420	Carson, CA 90805		
EVERGREEN ENVIRONMENTAL SERVICES	Road 30B	510.795.4400	<a href="http://www.evergreenoil.com">www.evergreenoil.com</a>
CAD982446874	Davis, CA 95616		
EVERGREEN ENVIRONMENTAL SERVICES	4139 North Valentine	510.795.4400	<a href="http://www.evergreenoil.com">www.evergreenoil.com</a>
CAD982446882	Fresno, CA 93711		
EVERGREEN ENVIRONMENTAL SERVICES	745 W. Betteravia	510.795.4400	<a href="http://www.evergreenoil.com">www.evergreenoil.com</a>
CAD982446858	Santa Maria, CA 93454		
EVERGREEN OIL COMPANY	6880 Smith Ave.	510.795.4400	<a href="http://www.evergreenoil.com">www.evergreenoil.com</a>
CAD980887418	Newark, CA 94560		
FILTER RECYCLING SERVICES, INC	180 W. Monte Ave. Unit A	909.424.1630	<a href="http://www.filterrecycling.com">www.filterrecycling.com</a>
CAD982444481	Rialto, CA 92316		
GENERAL ENVIRONMENTAL MANAGEMENT	11855 White Rock Road	916.351.0980	<a href="http://www.go-gem.com">www.go-gem.com</a>
DBA GEM LLC - CAD980884183	Rancho Cordova, CA 95742-6699		
INDUSTRIAL SERVICE OIL CO, INC.	1700 S. Soto Street	562.598.5577	<a href="http://www.isoci.com">www.isoci.com</a>
CAD099452708	Los Angeles, CA 90023		

# CALIFORNIA COMMERCIAL OFF-SITE HAZARDOUS WASTE FACILITIES LIST

Attachment 23.1-3

OIL CONSERVATION SERVICE, LLC	3256 N. Marks Ave	559.495.5497	
CAD980673842	Fresno, CA 93722-4919		
RAMOS ENVIRONMENTAL SERVICES	1515 S. River Road	916.371.5747	<a href="http://www.ramosoil.com">www.ramosoil.com</a>
CAD044003556	West Sacramento, CA 95691		
RIVERBANK OIL TRANSFER	5300 Claus Road	209.863.8181	
CAL000190816	Riverbank, CA 95367		
ROMIC ENVIRONMENTAL	2081 Bay Road	656.462.2380	<a href="http://www.romic.com">www.romic.com</a>
TECHNOLOGIES CORP - CAD009452657	East Palo Alto, CA 94303		
SAFETY KLEEN SYSTEMS, INC.	10625 Hickson Street, Suite A	(800) 669-5740	<a href="http://www.safety-kleen.com">www.safety-kleen.com</a>
CAT000613893	El Monte, CA 91731		
SAFETY KLEEN SYSTEMS, INC.	3561 S. Maple Street	(800) 669-5740	<a href="http://www.safety-kleen.com">www.safety-kleen.com</a>
CAD066113465	Fresno, CA 93725		
SAFETY KLEEN SYSTEMS, INC.	7979 Palm Ave., Suite E	(800) 669-5740	<a href="http://www.safety-kleen.com">www.safety-kleen.com</a>
CAT000613927	Highland, CA 92346		
SAFETY KLEEN SYSTEMS, INC.	2918 Worthen Ave	(800) 669-5740	<a href="http://www.safety-kleen.com">www.safety-kleen.com</a>
CAT000613935	Los Angeles, CA 90039		
SAFETY KLEEN SYSTEMS, INC.	1000 S. I Street	(800) 669-5740	<a href="http://www.safety-kleen.com">www.safety-kleen.com</a>
CAD093459485	Reedley, CA 93654		
SAFETY KLEEN SYSTEMS, INC.	6000 88th Street	(800) 669-5740	<a href="http://www.safety-kleen.com">www.safety-kleen.com</a>
CA0000084517	Sacramento, CA 95828		
SAN JOAQUIN FILTER RECYCLING	14287 E. Manning Ave	559.498.0240	<a href="mailto:sifilter@sbcglobal.net">sifilter@sbcglobal.net</a>
CAL000102751	Parlier, CA 93648		
VEOLIAES (ONYX) ENVIRONMENTAL SERVICES, LLC	1704 W. 1st Street	626.334.5117	<a href="http://www.veoliaes.com">www.veoliaes.com</a>
CAD008302903	AZUSA, CA 91702		



# CALIFORNIA COMMERCIAL OFF-SITE HAZARDOUS WASTE FACILITIES LIST

Attachment 23.1-3

VEOLIAES (ONYX) ENVIRONMENTAL SERVICES, LLC	1125 Hensley Street	510.233.8001	<a href="http://www.veoliaes.com">www.veoliaes.com</a>
CAT080014079	Richmond, CA 94801		

# CALIFORNIA COMMERCIAL OFF-SITE HAZARDOUS WASTE FACILITIES LIST

Attachment 23.1-3

## COMPLETE ALPHABETICAL LIST OF COMMERCIAL TREATMENT, STORAGE, DISPOSAL AND TRANSFER FACILITIES

ADVANCED ENVIRONMENTAL INC	13579 Whittram	909.356.4521	<a href="http://www.aercrecycling.com">www.aercrecycling.com</a>
CAT080025711	Fontana, CA 92335		
AERC.COM INC	30677 Huntwood Avenue	510.429.1129	<a href="http://www.aercrecycling.com">www.aercrecycling.com</a>
CAD982411993	Hayward, CA 94544		
ASBURY ENVIRONMENTAL SERVICES	2549 Scott Ave	800.974.4495	<a href="http://www.asburyenv.com">www.asburyenv.com</a>
CAL000827844	Chico, CA 95927		
AUTOMOTIVE ENVIRONMENTAL SERVICES	16117 Montoya Street	626.334.1835	<a href="http://www.romic.com">www.romic.com</a>
CAL000113451	Irwindale, CA 91702	800.909.8777	
BAYSIDE OIL/HEDRICK DISTRIBUTORS, INC	210 Encinal Street	831.427.3773	
CAD088838222	Santa Cruz, CA 95060		
BUTLER MANAGEMENT INC	3301 E. Avenue 1	661.946.2420	
CAD981426539	Lancaster, CA 93535	661.946.1124	
CHEMICAL WASTE MGT, KETTLEMAN	KETTLEMAN CITY, CA 93210	559.386.9711	<a href="http://www.wm.com/Templates/FAC4330/index.asp">www.wm.com/Templates/ FAC4330/index.asp</a>
CAT000646117			
CHICO DRAIN OIL SERVICE, LLC	1618 W. 5th Street	530.345.9043	
CAD980694103	Chico, CA 95926		
CHICO DRAIN OIL SERVICE, LLC	200 Dinsmore Drive	530.345.9043	
CAL930256136	Fortuna, CA 95540		
CLEAN HARBORS, Lenfest Rail	660 Lenfest Road	800.645.8264	<a href="http://www.cleanharbors.com">www.cleanharbors.com</a>
CAL000191813	San Jose, CA 95133		

# CALIFORNIA COMMERCIAL OFF-SITE HAZARDOUS WASTE FACILITIES LIST

Attachment 23.1-3

CLEAN HARBORS, SAN JOSE, LLC	1021 Berryessa Road	408.451.5114	<a href="http://www.cleanharbors.com">www.cleanharbors.com</a>
CAD059494310	San Jose, CA 95133		
CLEAN HARBORS, Buttonwillow, LLC	2500 W. Lokern Road	661.762.6200	<a href="http://www.cleanharbors.com">www.cleanharbors.com</a>
CAD980675276	Buttonwillow, CA 93206		
CLEAN HARBORS, Los Angeles, LLC	5756 Alba Street	323.277.2500	<a href="http://www.cleanharbors.com">www.cleanharbors.com</a>
CAD050806850	Los Angeles, CA 90058		
CLEAN HARBORS, WESTMORLAND, LLC	P.O. Box 158	760.344.9400	<a href="http://www.cleanharbors.com">www.cleanharbors.com</a>
CAD000633164	Westmorland, CA 92281		
CLEAN HARBORS, WILMINGTON	1737 Denni Street	310.835.9998	<a href="http://www.cleanharbors.com">www.cleanharbors.com</a>
CAD044429835	Wilmington, CA 90744		
CLEARWATER ENV MGT DBA ALVISO	5002 Archer Street	510.476.1740	<a href="http://www.clearwateremi.com">www.clearwateremi.com</a>
INDEPENDENT OIL - CAL000102751	Alviso, CA 95002		
CRANES WASTE OIL, INC	16095 HWY 178	760.378.3010	<a href="http://www.craneswasteoil.com">www.craneswasteoil.com</a>
CAD980813950	Weldon, CA 93283		
CROSBY and OVERTON - Plant #1	1630 W. 17th	562.432.5445	<a href="http://www.crosbyoverton.com">www.crosbyoverton.com</a>
CAD028409019	Long Beach, CA 90813		
DAVID H. FELL COMPANY, Inc.	6009 Bandini Blvd.	323.722.9992	<a href="http://www.dhfco.com">www.dhfco.com</a>
CAL000110141	Commerce, CA 90040		
DEMENNO KERDOON	2000 N. Alameda Street	310.537.7100	<a href="http://www.demennokerdoon.com">www.demennokerdoon.com</a>
CAT080013352	Compton, CA 90222		
DEMENNO KERDOON	3650 E. 26th Street	323.268.3387	<a href="http://www.demennokerdoon.com">www.demennokerdoon.com</a>
CAT080033681	Vernon, CA 90023		

# CALIFORNIA COMMERCIAL OFF-SITE HAZARDOUS WASTE FACILITIES LIST

Attachment 23.1-3

DEMENNO KERDOON	7300 Chevron Way	707.693.6008	<a href="http://www.demennokerdoon.com">www.demennokerdoon.com</a>
CAT080012602	Dixon, CA 95620		
ECOLOGY CONTROL INDUSTRIES	255 Parr Blvd.	510.235.1393	<a href="http://www.ecologycontrol.com">www.ecologycontrol.com</a>
CAD009466392	Richmond, CA 94801		
ECS REFINING	705 Reed Street	408.988.4386	<a href="http://www.ecsrefining.com/">http://www.ecsrefining.com/</a>
CAD003963592	Santa Clara, CA 95050		
EVERGREEN ENVIRONMENTAL SERVICES	16604 S. San Pedro Street	510.795.4400	<a href="http://www.evergreenoil.com">www.evergreenoil.com</a>
CAD981696420	Carson, CA 90805		
EVERGREEN ENVIRONMENTAL SERVICES	Road 30B	510.795.4400	<a href="http://www.evergreenoil.com">www.evergreenoil.com</a>
CAD982446874	Davis, CA 95616		
EVERGREEN ENVIRONMENTAL SERVICES	4139 North Valentine	510.795.4400	<a href="http://www.evergreenoil.com">www.evergreenoil.com</a>
CAD982446882	Fresno, CA 93711		
EVERGREEN ENVIRONMENTAL SERVICES	745 W. Betteravia	510.795.4400	<a href="http://www.evergreenoil.com">www.evergreenoil.com</a>
CAD982446858	Santa Maria, CA 93454		
EVERGREEN OIL COMPANY	6880 Smith Ave.	510.795.4400	<a href="http://www.evergreenoil.com">www.evergreenoil.com</a>
CAD980887418	Newark, CA 94560		
EXIDE INC	2700 S. Indiana Street	323.262.1101	<a href="http://www.exide.com">www.exide.com</a>
CAD097854541	Los Angeles, CA 90058		
FILTER RECYCLING SERVICES, INC	180 W. Monte Ave. Unit A	909.424.1630	<a href="http://www.filterrecycling.com">www.filterrecycling.com</a>
CAD982444481	Rialto, CA 92316		
GENERAL ENVIRONMENTAL MANAGEMENT	11855 White Rock Road	713.512.6200	
DBA GEM LLC - CAD980884183	Rancho Cordova, CA 95670		

# CALIFORNIA COMMERCIAL OFF-SITE HAZARDOUS WASTE FACILITIES LIST

Attachment 23.1-3

HERAEUS METAL PROCESSING, INC CAD060398229	13429 Alondra Blvd. Santa Fe Springs, CA 90670	562.483.1841	<a href="http://www.heraeuspm.com/home.htm">www.heraeuspm.com/home.htm</a>
INDUSTRIAL SERVICE OIL CO, INC. CAD099452708	1700 S. Soto Street Los Angeles, CA 90023	562.598.5577	<a href="http://www.isoci.com">www.isoci.com</a>
IONIZATION RESEARCH COMPANY CAL000175030	1823 Houret Court Milpitas, CA 95035		
J&B ENTERPRISES/KEN EPSMAN CAD982052797	1650 Russel Ave. Santa Clara, CA 95054	408.988.7900	<a href="http://www.jandb.com">www.jandb.com</a>
KINSBURSKY BROS SUPPLY INC CAD088504881	1314 N. Anaheim Blvd Anaheim, CA 92801	714.738.8516	<a href="http://www.kinsbursky.com">www.kinsbursky.com</a>
KW PLASTICS OF CALIFORNIA CAD982435026	1861 Sunnyside Ct. Bakersfield, CA 93308	661.392.0500	<a href="http://www.kwplastics.com">www.kwplastics.com</a>
LIGHTING RESOURCES, INC CAR000156125	805 East Francis Street Ontario, CA 91761	909.923.7252	<a href="http://www.lightingresourcesinc.com">www.lightingresourcesinc.com</a>
METECH INTERNATIONAL CAD077182293	6200 Engle Way Gilroy, CA 95020	408.848.3050	<a href="http://www.metechgroup.com">www.metechgroup.com</a>
NORANDA RECYCLING, INC CAD069124717	1695 Monterey Hwy San Jose, CA 95112-6113	408.998.4930	<a href="http://www.norandarecycling.com">www.norandarecycling.com</a>
OIL CONSERVATION SERVICE, LLC CAD980673842	3256 N. Marks Ave Fresno, CA 93722-4919	559.495.5497	
P.KAY METAL, INC CAL00002411	2448 East 25th Street Los Angeles, CA 90058	213.585.5058 604.882.8699	<a href="http://www.pkmetal.com">www.pkmetal.com</a>

# CALIFORNIA COMMERCIAL OFF-SITE HAZARDOUS WASTE FACILITIES LIST

Attachment 23.1-3

PACIFIC RESOURCE RECOVERY SERVICE	3150 E. Pico Blvd.	800.499.7145	<a href="http://www.pacificresourcerecovery.com">www.pacificresourcerecovery.com</a>
CAD008252405	Los Angeles, CA 90023		
PHIBRO TECH INC	8851 Dice Road	562.698.8036	<a href="http://www.phibro-tech.com">www.phibro-tech.com</a>
CAD008488025	Santa Fe Springs, CA 90670		
QUEMETCO INC	720 S. Seventh Ave.	626.330.2294	<a href="http://www.rsrcorporation.com">www.rsrcorporation.com</a>
CAD066233966	City of Industry, CA 91746		
RAMOS ENVIRONMENTAL SERVICES	1515 S. River Road	916.371.5747	<a href="http://www.ramosoil.com">www.ramosoil.com</a>
CAD044003556	West Sacramento, CA 95691		
RHO CHEM CORP	425 Isis Ave.	323.776.6233	<a href="http://www.pscnow.com">www.pscnow.com</a>
CAD008364432	Inglewood, CA 90301		
RIVERBANK OIL TRANSFER	5300 Claus Road	209.863.8181	
CAL000190816	Riverbank, CA 95367		
ROMIC ENVIRONMENTAL	2081 Bay Road	650.324.1638	<a href="http://www.romic.com">www.romic.com</a>
TECHNOLOGIES CORP - CAD009452657	East Palo Alto, CA 94303	1.800.909.1638	
SAFETY KLEEN CORP	10625 Hickson Street, Suite A	(800) 669-5740	<a href="http://www.safety-kleen.com">www.safety-kleen.com</a>
CAT000613893	El Monte, CA 91731		
SAFETY KLEEN CORP	3561 S. Maple Street	(800) 669-5740	<a href="http://www.safety-kleen.com">www.safety-kleen.com</a>
CAD066113465	Fresno, CA 93725		
SAFETY KLEEN CORP	7979 Palm Ave., Suite E	(800) 669-5740	<a href="http://www.safety-kleen.com">www.safety-kleen.com</a>
CAT000613927	Highland, CA 92346		
SAFETY KLEEN CORP	2918 Worthen Ave	(800) 669-5740	<a href="http://www.safety-kleen.com">www.safety-kleen.com</a>
CAT000613935	Los Angeles, CA 90039		

# CALIFORNIA COMMERCIAL OFF-SITE HAZARDOUS WASTE FACILITIES LIST

Attachment 23.1-3

SAFETY KLEEN CORP, REEDLEY R C	1000 S. I Street	(800) 669-5740	<a href="http://www.safety-kleen.com">www.safety-kleen.com</a>
CAD093459485	Reedley, CA 93654		
SAFETY KLEEN CORP	6000 88th Street	(800) 669-5740	<a href="http://www.safety-kleen.com">www.safety-kleen.com</a>
CA0000084517	Sacramento, CA 95828		
SAN JOAQUIN FILTER RECYCLING	14287 E. Manning Ave	559.498.0240	<a href="mailto:sifilter@sbcglobal.net">sifilter@sbcglobal.net</a>
CAL000102751	Parlier, CA 93648		
SIEMENS - FKA - U S FILTER RECOVERY SERVICES	5375 S. Boyle Ave.	323.277.1518	<a href="http://www.siemens.com">www.siemens.com</a>
CAD097030993	Vernon, CA 90058-4400		<a href="http://www.usfilter.com">www.usfilter.com</a>
VEOLIAES (ONYX) ENVIRONMENTAL SERVICES, LLC	1704 W. 1st Street	626.334.5117	<a href="http://www.veoliaes.com">www.veoliaes.com</a>
CAD008302903	AZUSA, CA 91702		
VEOLIAES (ONYX) ENVIRONMENTAL SERVICES, LLC	1125 Hensley Street	510.233.8001	<a href="http://www.veoliaes.com">www.veoliaes.com</a>
CAT080014079	Richmond, CA 94801		
WIT REFINING	538 Phelan Ave.	408.295.6414	<a href="http://www.witrefining.com">www.witrefining.com</a>
CAD980888598	San Jose, CA 95112		
List prepared 3/12/07			